

Hinge / Slide Units for Fixtures / Bases

Horizontal, Vertical

Features: Units with vertically moving and sliding arms. Machine the arm section to use for workpiece shape measurements. The rail and arm are pair engraved. Please use a rail and an arm as a set.

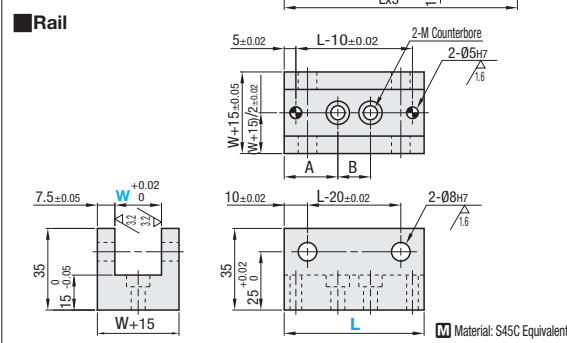
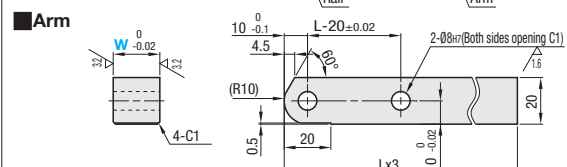
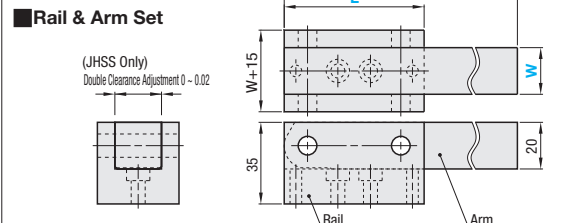
Hinge Units for Fixtures - Horizontal

(Alteration NB)

* The fulcrum pin is sold separately. **P907-**

RoHS 10

JHS (Rail & Arm Set)
JHSS (Joint Clearance of Rail and Arm 0 ~ 0.02, Sets)
JHR (Rail only)

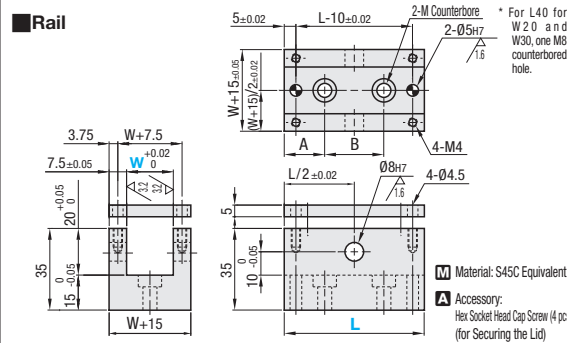
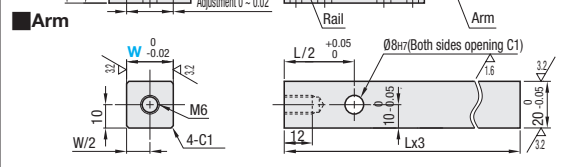
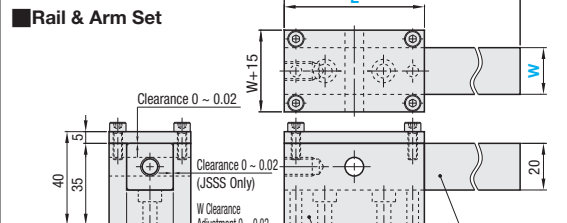


Slide Units for Fixtures

* Rail, lid and arm are not assembled before shipping.

RoHS 10

JSS (Rail & Arm Set)
JSSS (Joint Clearance of Rail and Arm 0 ~ 0.02, Sets)
JSR (Rail only)



Hinge Units for Fixtures

Part Number	Type	W	L	Counterbored Hole Size M*	Counterbored Hole Position				Unit Price		
					A	B	m	Z	h	d	JHS
(Rail & Arm Set)		10		For M5							
JHS (Clearance 0 ~ 0.02)		20	60	For M6	23	14	M6	12.5	15	24	
JHSS (Rail only)		30									
JHR		50	80	For M8	26.5	27	M8	13.5	18	30	

Slide Units for Fixtures

Part Number	Type	W	L	Counterbored Hole Size M*	Counterbored Hole Position			Unit Price		
					A	B	G	F	E	JSS
(Rail & Arm Set)		10		M5, 2 places	L=40: A=13.75 B=12.5	L=60: A=20 B=20				
JSS (Clearance 0 ~ 0.02)		20	40	M5, 2 places	L=40: A=20 B=0	L=60: A=20 B=20				
JSSS (Rail only)		30								
JSR		50	80	M8, 2 places	A=26.5 B=27					

* For detailed sizes of the counterbore holes, refer to the Technical Data on P2296.

Hinge/Slide Unit Bases for Inspection

JHSP
JSSP

RoHS 10

Material: S45C

Part Number	Type	A	B Selection	Applicable Hinge Unit	G	F	E	Unit Price
Hinge Unit Bases JHSP		65		JHS□10-60	18	32	50	
		75		JHS□20-60				
		85		JHS□30-60				
Slide Unit Bases JSSP		65		JSS□10-40	8.75	21.25		
		75		JSS□20-40	15	0	30	
		85		JSS□30-40				
		65		JSS□10-60	15	35	50	
		75		JSS□20-60				
		85		JSS□30-60				
	100		JSS□50-80	21.5	48.5	70		

Features: Units with vertically moving and sliding arms. Machine the arm section to use for workpiece shape measurements.

Hinge Units for Fixtures - Vertical

* The fulcrum pin is sold separately. **P907-**

RoHS 10

JHTS

Relief (Depth 0.5 - 2, Width W-20)

A-20±0.02

W+15

2-Ø9

2-Ø8H7

* Tolerance is applicable to dowel holes only.

Alphabets are engraved on the rail and arm. Please use a rail and an arm as a set.

M8 Screw (Fall Prevention)

(Rail)

W+0.02

25±0.05

(Arm)

W±0.02

20

15

⊥ 0.02/100 X

25

M8x1.25

Ø8H7

40

Lx3

25±0.05

15

A

(R10)

55

X

Material: S45C Equivalent

Part Number	Type	W	L Selection	A	Unit Price
JHTS		30	60	100	
		50	80	120	

Ordering Example

Part Number	-	L	-	B
JHS20	-	60	-	
JHSP100	-	40	-	75
JHTS30	-	60	-	

Alterations

Hinge Units for Fixtures - Horizontal / Slide Units for Fixtures

Part Number - L - B - (STC, NB, LC)

JHS20 - 60 - NB
 JSS20 - 60 - LC20

Hinge Units for Fixtures - Vertical

Part Number - L - (STC, LC, SYM)

JHTS50 - 80 - LC10

Alterations	Code	Spec.
Additional Surface Treatment (Black Oxide)	STC	Adds black oxide surface treatment.
Knob Bolt Set for Tightening and Fixing	NB	Instead of L pin hole, a knob-bolt is installed. A dedicated knob-bolt (Retained) is included. * Applicable only for W20, 30 and 50 of JHS and JHSS. - Knob-bolt has retained structure. - The Knob Bolt's threaded section retracts into the counterbore when the arm is lowered not damaging the rail.
Cuts L dimension of the arm.	LC	Cuts L dimension of the arm. [Ordering Code] LC20 (10mm Increment) * 10 ≤ LC ≤ Lx2
Positions the dowel hole and mounting hole symmetrically.	SYM	Positions the dowel hole and mounting hole symmetrically. * Applicable to JHTS only.

Example

Machine the arm as required.

JHS

Horizontally Fixed (Standard)

JHTS

Horizontally Fixed with Knob

JSS

Embedded Bushing

KJL5B Slide Units

JHTS

Product Shape

Hinge Unit