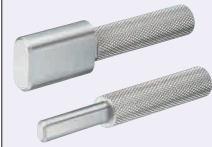


Slot Pins for Inspection Components

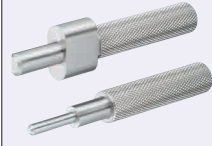
Oval Straight

Features: Oval Straight/Stepped slot pins for inspection jigs. For compatible bushings, see P.1850.

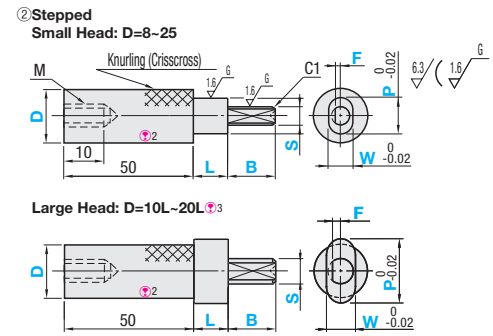
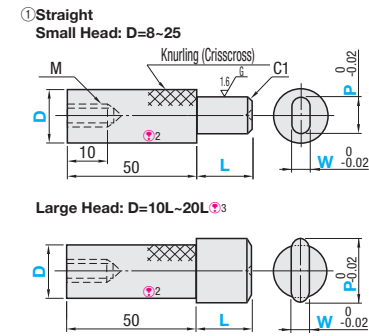
Oval
• Straight



• Stepped



Material	Hardness	Straight			Stepped Straight			S	g6
		Type	Type	Type	Type	Type	Type		
S45C Equivalent	-	KJPSC	KJPDHC	KJPGDC	3.00	-0.002	-0.008	3.01-6.00	-0.002
S45C Equivalent	45HRC~	KJPSCS	KJPDHCS	KJPGDCHC	3.01-6.00	-0.004	-0.012	6.01-10.00	-0.004
SUS304	-	KJPSCS	KJPDHCS	KJPGDCHC	6.01-10.00	-0.005	-0.014	10.01-18.00	-0.005
SUS440C or 13Cr stainless	45-50HRC	KJPSCC	-	KJPGDCC	18.01-29.00	-0.007	-0.020	18.01-29.00	-0.007



- ① SUS440C or 13Cr stainless has an identification groove on D part.
- ② For shorter handle length, specify the alteration ZC.
- ③ Dimensions not specified are the same as Small Head Type.
- ④ Centering hole may remain on tip depending on the diameter and the length.
- ⑤ Depending on diameter, the hardness of S45C hardening material may be less than 45HRC.
- ⑥ Large Head Type (D=10L ~ 20L) is only available for S45C.



Part Number	0.01mm Increment			0.1mm Increment		1mm Increment		M
	① Straight (P _{0.02})	② Stepped Straight (S _{0.02} /F _{0.05})	(Sg6/F _{0.03})	S	F(F=S/2)	L	B	
(S45C) KJPSC	(S45C) KJPDHC	(S45C) KJPGDC	8	4.00~ 6.00	3.00~ 5.00	0.3~ 2.5	Straight 5~30 ^{*1}	M4
(S45C Hardened) KJPSCS	(S45C Hardened) KJPDHCS	(S45C Hardened) KJPGDCHC	10	4.00~ 8.00	3.00~ 7.00	0.3~ 3.5		M5
(SUS304) KJPSCS	(SUS304) KJPDHCS	(SUS304) KJPGDCHC	12	4.00~ 10.00	3.00~ 9.00	0.5~ 4.5		M5
(SUS440C or 13Cr stainless) KJPSCC	(SUS440C or 13Cr stainless) KJPDHCS	(SUS440C or 13Cr stainless) KJPGDCHC	16	6.00~ 14.00	4.00~ 13.00	0.5~ 6.5		M5
			20	10.00~ 18.00	6.00~ 17.00	1.0~ 8.5		M5
			25	14.00~ 22.00	8.00~ 21.00	2.0~ 10.5		M5
			10L	10.00~ 16.00	5.00~ 15.00	1.0~ 7.5		M5
			12L	12.00~ 20.00	6.00~ 19.00	2.0~ 9.5		M5
			16L	16.00~ 25.00	8.00~ 24.00	2.0~ 12.0		M5
			20L	20.00~ 30.00	10.00~ 29.00	2.0~ 14.5		M5

*When the S dimension tolerance is g6, D-Shaped section cannot be made very thin. (S≥5.00, F≥1.0; F≥1.5 when D=20)
^{*1} L=21 ~ 30 is available only when the following conditions are all satisfied: Material: S45C Handle Dia. D≥10, Pin Dia.: P, W≥5

Ordering Example: Part Number (TYPE, D) - P - W - S - F - L - B
 Example: KJPDC16 - P10.97 - W8.47 - S6.00 - F2.0 - L5 - B10

D	① Straight Type Unit Price						② Stepped Type Unit Price					
	L dimension 20 or Less			L dimension 21 or More			S _{0.02} /F _{0.05}			Sg6/F _{0.03}		
	KJPSC	KJPSCS	KJPSCC	KJPSC	KJPSCS	KJPSCC	KJPDHC	KJPDHCS	KJPDHCS	KJPGDC	KJPGDCHC	KJPGDCHC
Small Head	8											
	10											
	12											
	16											
	20											
Large Head	10L											
	12L											
	16L											
	20L											

Ordering Example: Part Number (TYPE, D) - P - W - S - F - L - B - (CH, KH, ZC-etc.)
 Example: KJPDC12 - P8.50 - W4.50 - S3.50 - F1.2 - L5 - B10 - CH
 Example: KJPSC20 - P10.00 - W5.00 - S5.00 - F1.2 - L10 - B10 - ZC20

Alterations	Code	Spec.
Chain Alterations	CH	Loss-proof chain (length 600mm) is attached to gauge body. ④ For chains only, see P.1862.
Handle Length	ZC	Changes handle length 50 to 20, 30 or 40. Ordering Code: ZC20 ④ Handle Dia. D≥10, Pin Length (L or L+B) ≤ 20, Pin Dia. P, W, S ≥ 5, and S/2+F≥4.5 Applicable only when above conditions are all satisfied.
Engraving of P or W Dimension	KH	Machines flats on knurled head and engraves P and W dimensions (with the character orientation arbitrary). ④ Not applicable to handle length 10.

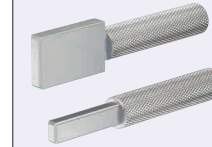
Alterations	Code	Spec.
P, W Dimension Tolerance	PKC	Changes P and W dimension tolerance to g6. ④ Combination with GN is not available.
No Polish on Pin	GN	No polishing on pin part. (Maintaining Roughness 1.6) ④ Combination with PKC is not available. ⑤ Not applicable to Sg6 type.

Slot Pins for Inspection Components

Square Straight

Features: Square Straight/Stepped slot pins for inspection jigs. For compatible bushings, see P.1851.

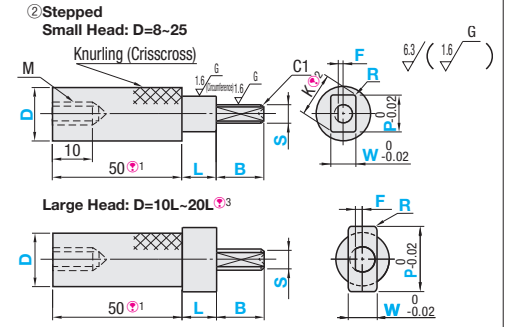
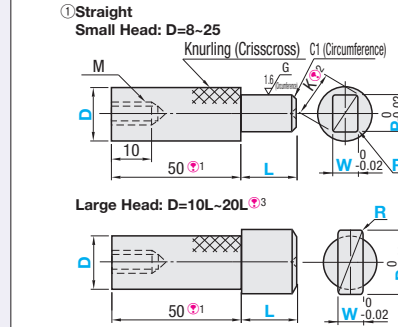
Square
• Straight



• Stepped



Material	Hardness	Straight			Stepped Straight			S	g6
		Type	Type	Type	Type	Type	Type		
S45C Equivalent	-	KJPDR	KJPDHR	KJPGDR	3.00	-0.002	-0.008	3.01-6.00	-0.002
S45C Equivalent	45HRC~	KJPDRS	KJPDHRS	KJPGDRS	3.01-6.00	-0.004	-0.012	6.01-10.00	-0.004
SUS304	-	KJPDRS	KJPDHRS	KJPGDRS	6.01-10.00	-0.005	-0.014	10.01-18.00	-0.005
SUS440C or 13Cr stainless	45-50HRC	KJPDRS	-	KJPGDRS	18.01-28.00	-0.007	-0.020	18.01-28.00	-0.007



- ① For shorter handle length, specify the alteration ZC.
- ② $K = \sqrt{(P-2R)^2 + (W-2R)^2} + 2R$
- ③ Dimensions not specified are the same as Small Head Type.
- ④ Centering hole may remain on tip depending on the diameter and the length.
- ⑤ Depending on diameter, the hardness of S45C hardening material may be less than 45HRC.
- ⑥ Large Head Type (D=10L ~ 20L) is only available for S45C.



Part Number	0.01mm Increment			0.1mm Increment		1mm Increment		M
	① Straight (P _{0.02})	② Stepped Straight (S _{0.02} /F _{0.05})	(Sg6/F _{0.03})	S	F(F=S/2)	L	B	
(S45C) KJPDR	(S45C) KJPDHR	(S45C) KJPGDR	8	4.00~ 6.00	3.00~ 5.00	0.3~ 2.5	Straight 5~30 ^{*1}	M4
(S45C Hardened) KJPDRS	(S45C Hardened) KJPDHRS	(S45C Hardened) KJPGDRS	10	4.00~ 8.00	3.00~ 7.00	0.3~ 3.5		M5
(SUS304) KJPDRS	(SUS304) KJPDHRS	(SUS304) KJPGDRS	12	4.00~ 10.00	3.00~ 9.00	0.5~ 4.5		M5
			16	6.00~ 14.00	4.00~ 13.00	0.5~ 6.5		M5
			20	10.00~ 18.00	6.00~ 17.00	1.0~ 8.5		M5
			25	14.00~ 22.00	8.00~ 21.00	2.0~ 10.5		M5
			10L	10.00~ 16.00	5.00~ 15.00	1.0~ 7.5		M5
			12L	12.00~ 20.00	6.00~ 19.00	2.0~ 9.5		M5
			16L	16.00~ 25.00	8.00~ 24.00	2.0~ 12.0		M5
			20L	20.00~ 30.00	10.00~ 29.00	2.0~ 14.5		M5

*When the S dimension tolerance is g6, D-Shaped section cannot be made very thin. (S≥5.00, F≥1.0; F≥1.5 when D=20)
^{*1} L=21 ~ 30 is available only when the following conditions are all satisfied: Material: S45C, Handle Dia. D≥10, Pin Dia.: P, W≥5

Ordering Example: Part Number (TYPE, D) - P - W - R - S - F - L - B
 Example: KJPDR16 - P10.97 - W8.57 - R0.5 - S6.00 - F2.0 - L5 - B10

D	① Straight Type Unit Price				② Stepped Type Unit Price					
	L dimension 20 or Less		L dimension 21 or More		S _{0.02} /F _{0.05}			Sg6/F _{0.03}		
	KJPDR	KJPDRS	KJPDR	KJPDRS	KJPDHR	KJPDHRS	KJPDHRS	KJPGDR	KJPGDRS	KJPGDRS
Small Head	8									
	10									
	12									
	16									
	20									
Large Head	10L									
	12L									
	16L									
	20L									

Ordering Example: Part Number (TYPE, D) - P - W - R - S - F - L - B - (CH, KH, ZC-etc.)
 Example: KJPDR12 - P8.50 - W7.50 - R0.5 - S6.00 - F1.5 - L5 - B10 - CH
 Example: KJPDR16 - P13.75 - W8.00 - R1.0 - S6.00 - F1.5 - L20 - B10 - ZC30

Alterations	Code	Spec.
Chain Alterations	CH	Loss-proof chain (length 600mm) is attached to gauge body. ④ For chains only, see P.1862.
Handle Length	ZC	Changes handle length 50 to 20, 30 or 40. Ordering Code: ZC20 ④ Handle Dia. D≥10, Pin Length (L or L+B) ≤ 20, Pin Dia. P, W or S ≥ 5, and S/2+F≥4.5 Applicable only when above conditions are all satisfied.
Engraving of P or W Dimension	KH	Machines flats on knurled head and engraves P and W dimensions (with the character orientation arbitrary). ④ Not applicable to handle length 10.

Alterations	Code	Spec.
P, W Dimension Tolerance	PKC	Changes P and W dimension tolerance to g6. ④ Combination with GN is not available.
No Polish on Pin	GN	No polishing on pin part. (Maintaining Roughness 1.6) ④ Combination with PKC is not available. ⑤ Not applicable to Sg6 type.