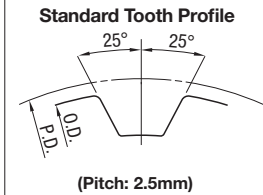


# Timing Pulleys - T2.5

Small Dia. Size Type has become available.



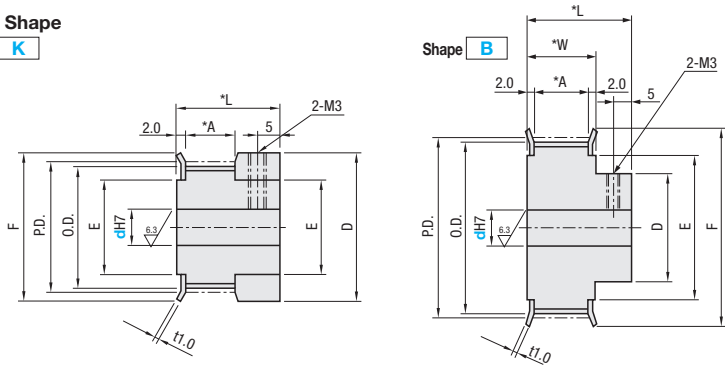
RoHS 10



Type	Belt Width	Material *1		Surface Treatment	Accessory *1
	7mm	Pulley	Flange		
TTPA	T2.5	Aluminum Alloy	Aluminum Alloy	Clear Anodize	SUS304

\*1. The above material and accessory might be changed to the ones equivalent to the originals. Flange is installed, and set screws are included with Shaft Bores P, N and C.

• Pulley Shape  
Shape **K**



Shaft Bore Specs. H (Round hole) and V / F (Stepped Hole) do not have tapped holes.

### Number of Teeth / Dimension

mm	Number of Teeth																		
	14	15	16	18	20	22	24	25	26	28	30	32	34	36	40	44	48	50	60
P.D.	11.14	11.94	12.73	14.32	15.92	17.51	19.10	19.89	20.69	22.28	23.87	25.46	27.06	28.65	31.83	35.01	38.20	39.79	47.75
O.D.	10.60	11.40	12.20	13.80	15.40	17.00	18.55	19.35	20.15	21.75	23.35	24.95	26.55	28.10	31.30	34.50	37.70	39.25	47.25
D	14	14	14	18	21	12	12	12	12	14	14	16	16	16	18	24	26	28	30
F	14	14	14	18	20	22	25	25	25	28	28	30	32	32	35	44	44	44	50
E	8	8	8	11	13	14	16	16	16	18	18	20	23	23	25	28	28	32	38

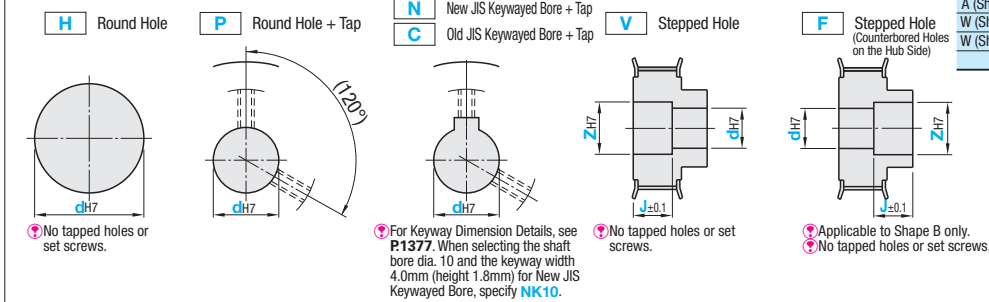
### Tapped Hole Dimensions (Shaft Bore Specs.: P, N, C)

dH7 Shaft Bore I.D. (Coarse)	M	Accessory Set Screw
4, 5	M3	M3x3
6-14	M4	M4x3

### Belt Nominal Width / Dimension

mm	Nominal
	T25070
A (Shape K)	6
A (Shape B)	8
W (Shape K)	10
W (Shape B)	12
L	20

Shaft Bore Specs. Surface treatment may not be applied to shaft bores.



Type	Number of Teeth	Type Nominal Width	Pulley Shape	Shaft Bore Specifications (-): Specify in 1mm increment, (,): Select the former or latter				
				H Round Hole	P Round Hole + Tap	N, C Keyway + Tap	V, F Stepped Hole	
							V, F	Z Z-d <sub>2</sub> 2 (0.1mm Increment)
Aluminum TTPA	14	T25070	K	4	4			
	15			4	4			
	16			4, 5	4, 5			
	18			4, 5	4, 5			
	20			5, 6, 6.35	5, 6, 6.35			
	22			5, 6, 6.35	5, 6, 6.35		5, 6	7, 8
	24		5, 6, 6.35	5, 6, 6.35		5, 6	7, 8	
	25		5, 6, 6.35	5, 6, 6.35		5, 6	7, 8	
	26		5, 6, 6.35	5, 6, 6.35		5, 6	7, 8	
	28		5, 6, 6.35	5, 6, 6.35		5, 6	7, 8	
	30		5, 6, 6.35	5, 6, 6.35		5, 6	7, 10	
	32		5, 6, 6.35, 7, 8	5, 6, 6.35, 7, 8	8	5-10	7-12	
	34		5, 6, 6.35, 7, 8	5, 6, 6.35, 7, 8	8	5-10	7-12	
	36		5, 6, 6.35, 7, 8	5, 6, 6.35, 7, 8	8	5-13	7-15	
	40		5, 6, 6.35, 7, 8	5, 6, 6.35, 7, 8	8	5-14	7-16	
	44		6, 6.35, 7-10	6, 6.35, 7-10	8, 10, NK10	6-14	8-16	
	48		6, 6.35, 7-12	6, 6.35, 7-12	8, 10, NK10, 11, 12	6-14	8-16	
	50		6, 6.35, 7-12	6, 6.35, 7-12	8, 10, NK10, 11, 12	6-22	8-24	
60	6, 6.35, 7-14	6, 6.35, 7-14	8, 10, NK10, 11-14	6-24	8-26			

Shaft Bore Dia. 8, 11, 13, 14 are not available for Shaft Bore Spec. C.



Ordering Example

Part Number - Pulley Shape - Shaft Bore Specs., I.D. - Z - J  
 (Shaft Bore Specs.: H, P, N, C) TTPA18T25070 - K - P4  
 (Shaft Bore Specs.: V, F) TTPA60T25070 - B - V15 - Z20 - J8

Number of Teeth	Body Price A2017 (Clear Anodize)	Shaft Bore Machining Charge (Body Price +)		
	T25070	P Hole	N, C Hole	V, F Hole
14				
15				
16				
18				
20				
22				
24				
25				
26				
28				
30				
32				
34				
36				
40				
44				
48				
50				
60				



Alterations

Part Number - Pulley Shape - Shaft Bore Specs., I.D. - Z - J - (KC90...etc.)  
 TTPA40T25070 - B - P5 - Z - J - FC33

Alterations Code	Set Screw Angle	Flange Not Swaged	Flange Swaged on One Side	Flange Cut
Spec.	KC90 Changes an angle of set screw to 90. 	NFC (Flange 2 pcs. Included) Ordering Code NFC 	RFC, LFC (Flange 1 pc. Included) Ordering Code RFC Not applicable to Shape K. 	FC Cut the flange O.D. in 0.5mm increment. Ordering Code FC17 Application Notes: FC<(O.D.)+1 FC<F-2 No surface treatment is applied on flange circumference. 

Alterations Code	Side Through Hole / Side Tapped Hole, 3 places	Side Through Hole / Side Tapped Hole, 4 places	Tapped Hole Dimensions	Changes the length of the included set screws.
Spec.	KTC, QTC Machine Through Hole / Tapped Hole on the side surface of hub side Ordering Code (Through Hole) KTC20-K5.0 Ordering Code (Tapped Hole) QTC28-M4 Selection (Through Hole) K Selection K4.0~K13.0 (0.5mm Increment) Selection (Tapped Hole) M Selection M3, M4, M5, M6, M8 Application Notes: Not applicable to Shape K. Not applicable to Shaft Bore Spec. F. When KTC/QTC is selected for Shaft Bore Specs. P, N and C, KC90 is not available. 	KFC, QFC Machine Through Hole / Tapped Hole on the side surface of hub side Ordering Code (Through Hole) KFC20-K5.0 Ordering Code (Tapped Hole) QFC28-M4 Selection (Through Hole) K Selection K4.0~K13.0 (0.5mm Increment) Selection (Tapped Hole) M Selection M3, M4, M5, M6, M8 Application Notes: Not applicable to Shape K. Not applicable to Shaft Bore Spec. F. Specify KC90 when selecting KFC/QFC for Shaft Bore Specs. P, N and C. Side holes and tooth side tapped holes might interfere with each other. For details, see the relevant CAD data. 	TPC Ordering Code TPC5 Application Notes: Applicable to Shaft Bore Specs. P, N, C only. M TPC M3 M4 M4 M3	SLH Ordering Code SLH10 Application Notes: Applicable to Shaft Bore Specs. P, N, C only. Set Screw SLH M3x3 6 M4x3 5, 8

For details, see the "Timing Pulley Alterations - Overview" section (P.1378).