



Ordering Example

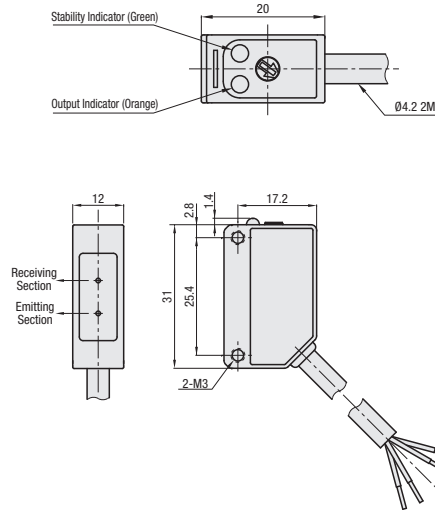
Part Number

C-MPESS-T



(When bracket is installed)

C-MPESS-□



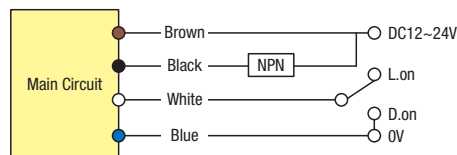
Accessory  
L-Shaped Bracket  
Cross Recessed Screws M3x2 pcs. (4 pcs. for Through Beam Type)  
Reflecting Mirror (Retroreflective Type only)

Part Number	Detection Method	Detection Distance	Output	Light Emitting Element	Connection Method
C-MPESS-T	Through Beam Type	5m	NPN Output	Infrared LED	Cable 2m
C-MPESS-R	Retroreflective Type	2m			
C-MPESS-D	Diffusion Reflective Type	30cm			
C-MPESS-LD	Limited Reflective Type	3cm			

Specifications

Detection Method	Through Beam Type	Retroreflective Type	Diffusion Reflective Type	Limited Reflective Type
Part Number	C-MPESS-T	C-MPESS-R	C-MPESS-D	C-MPESS-LD
Detection Distance	5m	2m	30cm	3cm
Light Source	Infrared LED 940nm	Infrared LED 850nm		
Power Supply Voltage	DC12~24V			
Current Consumption	40mA or less	25mA or less	30mA or less	
Control Output	NPN Open Collector - Light ON / Dark ON Switch, Max. 100mA/DC24V			
Response Time	1.5ms or less			
Dielectric Strength	20MΩ/min. (DC500V)			
Withstand Voltage	AC1000V 60Hz 60 sec.			
Operating Temperature	-20°C ~ 60°C (No Freezing / Condensation)			
Operating Humidity	35~85% RH			
Protection Structure	IEC Standard IP64			
Material	ABS			
Weight	Approx. 115g (Total of Emitter / Receiver)	Approx. 60g		

Schematics



Ordering Example

Part Number

C-MPESM-STD

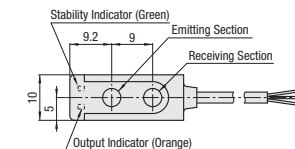
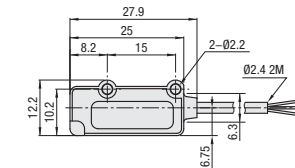


STD

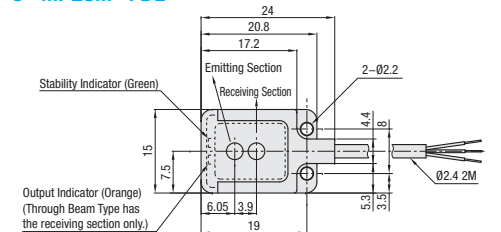
FTD

FDL

Side View  
C-MPESM-STD



Flat View  
C-MPESM-FTD  
C-MPESM-FDL



Accessory  
Cross Recessed Screws M2x2 pcs. (4 pcs. for Through Beam Type)

Part Number	Detection Method	Shape	Operation	Detection Distance	Output	Light Emitting Element	Connection Method
C-MPESM-STD	Through Beam Type	Side View	Dark ON	2m	NPN Output	Infrared LED	Cable 2m
C-MPESM-FTD		Flat View		1m			
C-MPESM-FDL	Diffusion Reflective Type		Light ON	3cm			

Specifications

Type	Through Beam Type		Diffusion Reflective Type
	Side View	Flat View	Flat View
Part Number	C-MPESM-STD	C-MPESM-FTD	C-MPESM-FDL
Detection Distance	2m	1m	3cm, White Board 100x100 (3.5cm)
Light Source	Infrared LED 940nm		Infrared LED 632nm
Power Supply Voltage	DC12 ~ 24V (Ripple p-p 10% or less)		
Current Consumption	30mA or less	15mA or less	15mA or less
Control Output	NPN Open Collector - Dark ON, Max. 100mA/DC24V		NPN Open Collector - Light ON, Max. 100mA/DC24V
Response Time	1ms or less	0.5ms or less	0.5ms or less
Dielectric Strength	20MΩ/min. (DC500V)		
Withstand Voltage	AC1000V 60Hz 60 sec.		
Operating Temperature	-10°C ~ 45°C (No Freezing / Condensation)		
Operating Humidity	35~85% RH		
Protection Structure	IEC Standard IP64		
With or Without Protection Circuit	Power Supply Reverse Polarity Protection Circuit / Output Short Protection Circuit		
Material	ABS		
Weight	Approx. 40g		Approx. 20g

Schematics

