

Blind Joint Components

Parallel Joint Kits

Alterations necessary to use this component

L Type Hole Alterations
P.691

■Feature: Extrusions can be connected in parallel. Post assembly additions enabling type is also provided.

Parallel Joint - Pre-Assembly Insertion Type -

RoHS 10



Parallel Joint - Post-Assembly Insertion Type -



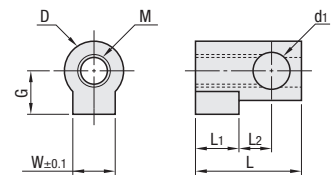
(Ref.) Corner section when using this joint



Part Name	Material	Surface Treatment
Pre-Assembly Insertion Parallel Post	SCS13	-
Post-Assembly Insertion Parallel Post	SCS13	-
Joint Guide	SUS304	-
Set Screw	SCM435	Black Oxide Film

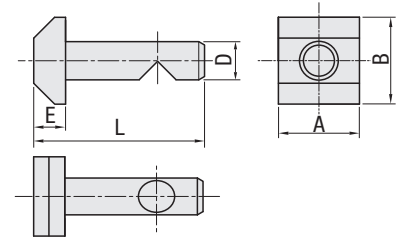
HLJ
(Parallel Joint Kits Pre-Assembly Insertion Type)
HALJ
(Parallel Joint Kits Post-Assembly Insertion Type)

Joint Guide (Component ①)

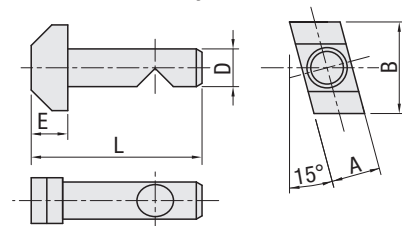


Parallel Joint (Component ②)

②-1 Pre-Assembly Insertion Parallel Post



②-2 Post-Assembly Insertion Parallel Post



Part Number	Type	No.	Accessory					
			①② Parallel Post	Quantity	③ Joint Guide	Quantity	④ Set Screw	Quantity
HLJ Pre-Assembly Insertion Type		5	Pre-Assembly Insertion Parallel Post 5	1	5	1	M4x8	1
		6	Pre-Assembly Insertion Parallel Post 6		6		M6x12	
		8	Pre-Assembly Insertion Parallel Post 8		8		M6x16	
HALJ Post-Assembly Insertion Type		5	Post-Assembly Insertion Parallel Post 5	1	5	1	M4x8	1
		6	Post-Assembly Insertion Parallel Post 6		6		M6x12	
		8	Post-Assembly Insertion Parallel Post 8		8		M6x16	

Detailed Dimensions of Components

Joint Guide (Component ①)

Part Name	D	G	W	L	L1	L2	d1	M
Joint Guide 5	6.9	5.5	5.8	13.0	5	4	4.1	4
Joint Guide 6	10.9	8	7.8	19.5	8	6	6.8	6
Joint Guide 8	12.8	9	9.8	28.0	11	7.5	9.9	6

Pre-Assembly Insertion Parallel Post (Component ②-1)

Part Name	D	L	E	A	B
Pre-Assembly Insertion Parallel Post 5	4	20.5	3.5	10	10
Pre-Assembly Insertion Parallel Post 6	6.6	29.5	5.5	14	15
Pre-Assembly Insertion Parallel Post 8	9.8	41	6	17	17

Post-Assembly Insertion Parallel Post (Component ②-2)

Part Name	D	L	E	A	B
Post-Assembly Insertion Parallel Post 5	4	20.5	3.5	6	10
Post-Assembly Insertion Parallel Post 6	6.6	30.4	6.4	8	15
Post-Assembly Insertion Parallel Post 8	9.8	41.4	6.4	10	17

Extrusions Applicable to This Joint

Parallel Joint No.	Applicable Extrusion No.				[Exception] Extrusion Not Available
5	5-2020*	5-2040	5-2060	5-2080	*1HFSH and HFSC are not applicable since L holes cannot be added.
	5-4040	5-4060	5-4080		
6	6-3030*	6-3060*	6-3090	6-30120	*1HFSH and HFSC are not applicable since L holes cannot be added.
	6-5050	6-50100			
	6-6060	6-6090			
8	8-4040*	8-4080*	8-40120	8-40160	*1HFSH and HFSC are not applicable since L holes cannot be added.

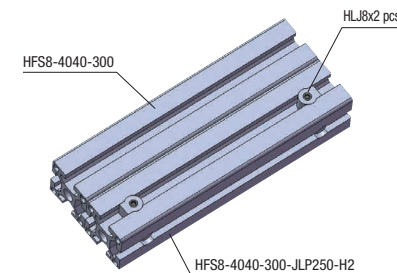


Example Parallel Joint Connection

Step	Front View / Side View	Parallel Joint	Description
1			Mount a parallel post to the extrusion (A). (Post-Assembly Insertion Type can be inserted by turning from upside of the slot.) Ⓢ Parallel Post is for Standard Type and With Rotation Stopper Type.
2			Insert a Joint Guide into the extrusion (B) with L Holes (P.691). Aligning of the holes is not required.
3			Move the plate (A) close to the plate (B) while putting the parallel post through the through hole of joint guide.
4			Tighten the set screw to the side of joint guide.
5			When the set screw is tightened against the V groove on the post, the extrusions (A) and (B) will pull together and be bound.

* Part Numbers for the parts shown on the above example

- Connecting extrusions with 2 or more slots on one side
Insert joint guide from the both ends of L hole, then connect with two or more parallel joints.
- Connecting extrusions with 3 or more slots
L holes are added on the outside rows only. Not applicable on rows in the middle.



- As long as interference between each joint does not occur, multiple extrusions can be connected.
Use multiple connections when strength is required.

Ordering Example
Part Number
HLJ8