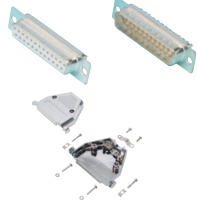


Information on Components Used

Connector / Hood

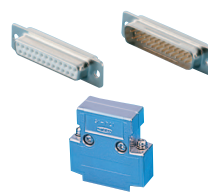
Misumi Original D-sub Connector



Connector	
Manufacturer	Misumi
Model Number	DB-**-S*
More Information	OP.17

EMI Countermeasure Hood	
Manufacturer	Misumi
Model Number	MDA-**-H-***
More Information	OP.30

D-sub Connector



Connector	
Manufacturer	DDK
Model Number	17JE-*****-02-D1
Rated Current	5A
Rated Voltage	300 VAC
More Information	OP.18

Hood	
Manufacturer	DDK
Model Number	17JE-**-H-1*-CF
More Information	OP.31

Misumi Original MIL Connector



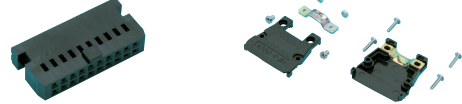
Female Connector	
Manufacturer	Misumi
Model Number	MILE-**-2.54-S
More Information	OP.49

MIL Connector



Female Connector	
Manufacturer	Hirose Electric Co., Ltd
Model Number	HIF3B-****D-2.54*
Rated Current	1A
Rated Voltage	200 VAC
More Information	OP.48

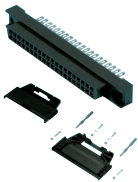
CHIFS / BHHIFS (Straight) BDHIFS / BDHIFSK (Connector Only)



Female Connector	
Manufacturer	Hirose Electric Co., Ltd
Model Number	HIF3B-**-D-2.54C
Rated Current	1A
Rated Voltage	200 VAC
More Information	OP.45

Hood	
Manufacturer	Hirose Electric Co., Ltd
Model Number	HIF3-**-CV71
Rated Current	1A
Rated Voltage	200 VAC
More Information	OP.45

FCN Connector



Connector	
Manufacturer	FUJITSU Component
Model Number	FCN-361*0**-AU
Rated Current	3 ADC or less
Rated Voltage	250 VAC or less
More Information	OP.64

Hood	
Manufacturer	FUJITSU Component
Model Number	FCN-360C0**-*
More Information	OP.66

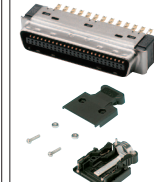
IEEE1284 (MDR) Pressure Welding



Connector	
Manufacturer	Sumitomo 3M
Model Number	101**-***OEL
Rated Current	0.5A
Rated Voltage	150 VAC
More Information	OP.83

Plastic Hood (40-core and 68-core are unavailable)	
Manufacturer	Sumitomo 3M
Model Number	103**-52F0-008
More Information	OP.85

IEEE1284 (MDR) Soldering



Connector	
Manufacturer	Sumitomo 3M
Model Number	101**-3000PE
Rated Current	0.5A
Rated Voltage	150 VAC
More Information	OP.83

Plastic Hood	
Manufacturer	Sumitomo 3M
Model Number	103**-52F0-008
More Information	OP.85

Misumi Original IEEE1284 (MDR)



MDR Connector (Pin)	
Model Number	FMCIE**MA**
Rated Current	1A
Rated Voltage	500V
Manufacturer	Misumi
Remarks	Not currently available for sale in Japan

Misumi Original IEEE1284 (MDR)



MDR Shell	
Model Number	MPL**NK**ALS
Specification	EMI Protection
Materials	Nickel-plated Steel
Manufacturer	Misumi
Remarks	Not currently available for sale in Japan

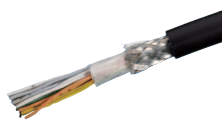
Multi-Core Cable

SB Cable



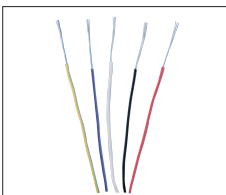
Manufacturer		Misumi	
Model Number	SS30WS		
Standard Acquired	AWM20276		
Rated Temperature	80°C		
Flame Retardance	VW-1SC		
Bending Radius mm (Fixed Parts)	Finished Outer Diameter x 8		
Bending Radius mm (Movable Parts)	—		
More Information	OP.1339		

Other Than SB Cable



Manufacturer		Misumi	
Model Number	MAST-UL20276SB		
Standard Acquired	AWM20276		
Rated Temperature	0°C ~ 80°C		
Flame Retardance	—		
Bending Radius mm (Fixed Parts)	Finished Outer Diameter x 10		
Bending Radius mm (Movable Parts)	—		
More Information	OP.1333		

Single-core Wire



A, B, C, D, E Cables	
Manufacturer	—
Model Number	UL1007 Equivalent
Standard Acquired	AWM1007
Rated Temperature	0°C ~ 80°C
Flame Retardance	—
Bending Radius mm (Fixed Parts)	—
Bending Radius mm (Moving Parts)	—
More Information (Reference)	OP.1375 (Similar Specifications)

Other Components Used

Mini DIN Type



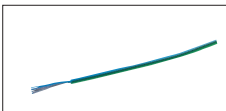
Cable	
Manufacturer	—
Model Number	—
Remarks	Mold Type Mini DIN Connector Cream Color Not in Catalog

Crimp Terminal

Used for M3 / M3-5 screw terminal block

Y Terminal (OP.469) F0.08-3, F0.3-3, F1.25-3.51 Round Terminal (OP.464) 0.3-3

Ground Wire / Ground Terminal



Single-Core Wire for Ground (Common for All Model Numbers)	
Model Number	UL1007-16-GN Equivalent
Standard Acquired	UL1007
Bending Radius	Finished Outer Diameter x 8
More Information	OP.1375 (Similar Specifications)



Crimp Terminal for Ground	
Model Number	RBA1.25-3.5RE Equivalent
Size	3.7mm
Outer Width	6.6mm
Rated Voltage	300V
More Information	OP.472

Mitsubishi Electric PLC Supported Cables
Keyence PLC-supported Cables
Omron PLC-supported Cables
Yokogawa Electric PLC Supported Cables
Fuji Electric PLC Supported Cables
Terminal Block Combination Cables for PLC
Terminal Blocks for PLC
PLC Compatible Cable Documents