

Sheet Metal Mounting Plates / Brackets

Convex Bent Type



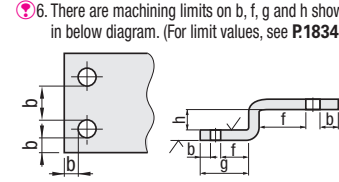
RoHS10

Part Number	Material	Material	Surface Treatment
SP	SPCC		-
SPB			Black Oxide
SPU			Trivalent Chromate (Clear)
SPK			Trivalent Chromate (Black)
AM	A5052		Anodize (Clear)
AMW			Anodize (Black)
SUD	SUS304(2B)		-

4.5, 6.0 thickness type is SPHC material.

Specifications, Machining Limits

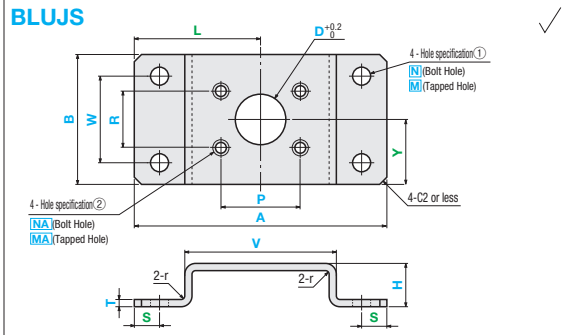
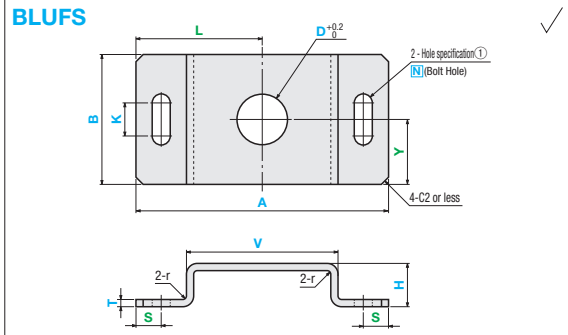
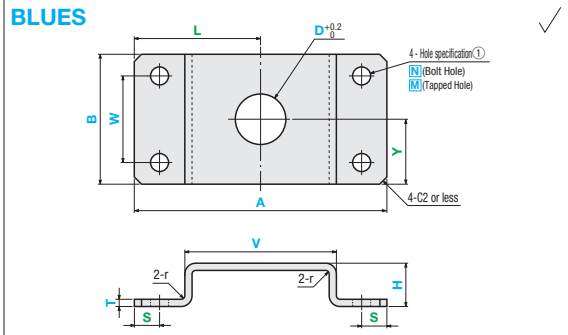
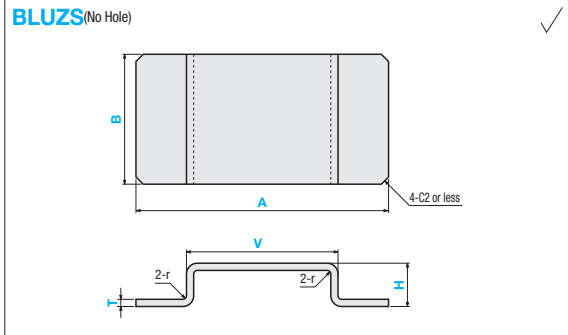
- For tolerances, see P.1833.
- Burr height 0.1 or less
- Bend angle tolerance $\pm 1^\circ$
- Slotted holes may be shaped as shown below depending on dimensions. (No negative effects on mounting functionality)
- There will be scratches and bulges by Press Brake. For details and bend radius information, see P.1832.
- There are machining limits on b, f, g and h shown in below diagram. (For limit values, see P.1834.)



Hole Type Selection Chart

Hole Type	Bolt Hole	Tapped Holes (Coarse Thread)	Through Hole
Code	N, NA	M, MA	D
Shape Diagram			

For d dimension, see "N, NA Machining Dimensions" on lower section of specification chart.



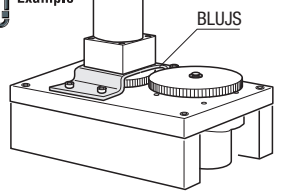
Alterations



Price Calculations
Add surface treatment charges to the body prices.
(Ex.) For BLUZS-SPU-A80-B40-T1.6-H20-V50

$$\text{Main Body Price} + \text{Surface Treatment Charge} = \text{Price}$$

Alteration	Corner cut change (4 corners)
4-CC	
Code	CC
Spec.	CC = 1mm Increment 1 ≤ CC ≤ 20 Ordering Code Add CC at the end of the Part Number designation. (Ex.) ~CC10

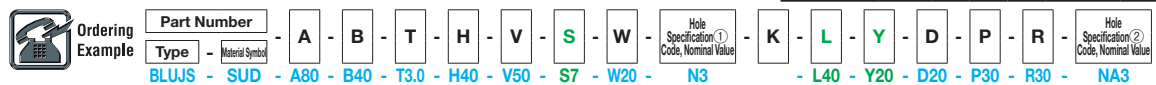


Green colored parameters can be omitted. If the parameter setting is omitted, the holes will be evenly distributed about the center. For details, see P.1834.

Part Number	1mm Increment	Selection			1mm Increment	S	W	Hole Specification (1)	K	L	Y	D	P	R	Hole Specification (2)
		A	B	T											
BLUZS	SP														
BLUES	SPB														
BLUFS	SPU														
BLUJS	SPK														
	AM	30	20	1.6	1.5	1.5	10	min 15	0.1mm	0.1mm	Increment	3~30	0.5	0.1mm	Increment
	AMW	200	200	2.3	2.0	2.0	100	V ≥ H							
	AMB			3.2	3.0	3.0									
	SUD			4.5	4.0	4.0									
				6.0											

If the specified hole location is close to the edges, the hole may be deformed but will be machined as specified if within machining limits.

N, NA machining dimensions	N, NA specified Value	0	3	4	5	6	8	10
Through Hole Dia. (d) (No Hole)		3.5	4.5	5.5	6.5	9	11	



A	B	T		Body Price Unit Price												Surface Treatment Charge (+Body Price)					
		SPCC	SUS304	BLUZS			BLUES			BLUFS			BLUJS			Black Oxide	Trivalent Chromate (Clear, Black)	Anodize (Clear)	Anodize (Black)		
		SPHC	A5052	SP	AM	SUD	SP	AM	SUD	SP	AM	SUD	SP	AM	SUD	SPB	SPU	SPK	AMW	AMB	
30-120	20-100	1.6	1.5																		
		2.3	2.0																		
		3.2	3.0																		
		4.5	4.0	-	-	-	-	-	-	-	-	-	-	-	-	-	-	-	-	-	-
		6.0	-	-	-	-	-	-	-	-	-	-	-	-	-	-	-	-	-	-	-
		1.6	1.5																		
	141-200	2.3	2.0																		
		3.2	3.0																		
		4.5	4.0	-	-	-	-	-	-	-	-	-	-	-	-	-	-	-	-	-	-
		6.0	-	-	-	-	-	-	-	-	-	-	-	-	-	-	-	-	-	-	-
		1.6	1.5																		
		2.3	2.0																		
121-200	101-140	3.2	3.0																		
		4.5	4.0	-	-	-	-	-	-	-	-	-	-	-	-	-	-	-	-	-	
		6.0	-	-	-	-	-	-	-	-	-	-	-	-	-	-	-	-	-	-	-
		1.6	1.5																		
		2.3	2.0																		
		3.2	3.0																		
	141-200	4.5	4.0	-	-	-	-	-	-	-	-	-	-	-	-	-	-	-	-	-	-
		6.0	-	-	-	-	-	-	-	-	-	-	-	-	-	-	-	-	-	-	-
		1.6	1.5																		
		2.3	2.0																		
		3.2	3.0																		
		4.5	4.0	-	-	-	-	-	-	-	-	-	-	-	-	-	-	-	-	-	-