

Lead Screw

For Lead Screw Support Unit Type



A dedicated lead screw configured for bearings, stopper clamp, and a position indicator and a handle. Ordering can be completed only with specifying D, L, and S dimensions.

Type		Material	Surface Treatment
Right-Hand Thread	Left-Hand Thread		
MTWK	MTWLK	S45C	Black Oxide
MTWBK	MTWBLK		
RMTWK	RMTWLK	SUS303	Low Temperature Black Chrome Plating
MTSWK	MTSWLK		

RoHS 10

Right-Hand Thread / Left-Hand Thread *When D=20, 22, and 25

R	e Tolerance	m+0.14 0
8	5	+0.075 0
10	9.6	0 -0.09
12	11.5	0 -0.11
15	14.3	0 -0.11

Part Number	1mm Increment		F	R	B	T	Q	A	M x Pitch	E	D	Pitch P	
	Type	D											L
(Right-Hand Thread) MTWK	12	80~1000	2≤S≤80	10	8	7	26	8	11	8x1.0	6	12	2
(Left-Hand Thread) MTWLK	14			12	10	8	29	10	12	10x1.0	8	14	3
MTWBK	16	100~1200	2≤S≤95	12	12	8	29	12	12	12x1.0	10	16	3
MTWBLK	18			12	12	8	29	12	12	12x1.0	10	18	4
RMTWK	20	150~1200	2≤S≤100	12	15	9	34	15	14	15x1.0	12	20	4
RMTWLK	22			12	15	9	34	15	14	15x1.0	12	22	5
MTSWK	25			12	15	9	34	15	14	15x1.0	12	25	5
MTSWLK				12	15	9	34	15	14	15x1.0	12	25	5

⚠ D dimension 22 is not available for MTSWK.

⚠ D dimensions 22 and 25 are not available for MTSWLK.

⚠ Low Temperature Black Chrome Plated Products: L≤1000

Ordering Example: Part Number - L - S
 Example: MTWK20 - 800 - S90

Alterations: Part Number - L - S - (NAR, RC, FE, SE, ME, MR, ZE, KE)
 Alterations: MTWK20 - 800 - S90 - KE0 - C30

Alterations	No Retaining Ring Groove on Support Side Shaft End	No Machining on Support Side	Flat Machining	Wrench Flats	Coarse Tapping	Square Chamfering	Keyway
Code	NAR (R part)	RC (R part)	FE (E part)	SE (E part)	ME (E part) MR (E Side)	ZE (E part)	KE (E part)
Spec.	No retaining ring machining performed on the R part for the support side end. Ordering Code: NAR	No machining performed on the R part. Ordering Code: RC ⊗ Combination with other R part alteration is not available.	FE,FW,FY=0.5mm increment FE=Applied on E Ordering Code: FE5-FW10-FY1 ⊕ FY≤1.0 ⊕ FE=0, or FE≥2 ⊕ 3≤FW≤20	SE,SW,SY=1mm increment SE=Applied on E part Ordering Code: SE3-SW10-SY7 ⊕ SE≥E-2 ⊕ 3≤SY≤20 ⊕ SE=0, or FE≥2	ME=Applied on E part MR=Applied on R part and left end face Ordering Code: ME6 E, R, D ME, MR Selection Range 6 3 8 3, 4 10 3, 4, 5 12 3, 4, 5, 6 14~15 3, 4, 5, 6, 8 16~18 5, 6, 8, 10 20~25 5, 6, 8, 10, 12 ⊗ When combining with another alteration, do not specify this alteration in such a way that the shaft end thickness becomes less than 1mm. Other Alterations: Tapped Hole (1mm or more is required).	A=1mm increment ZE=Applied on E part Ordering Code: ZE12-W10-A8 ⊕ Can be combined with Tapped Hole machining only on the same shaft. (See P.787 for machining conditions.) ⊕ 5≤A≤20 ⊕ ZE=E Specified	KE, C=1mm increment ⊕ C=60 ⊕ KE≥2 ⊕ S-C-KE≥2 ⊕ When KE=0, keyway R will be eliminated on the shaft end side. KE=Applied on E part Ordering Code: KE8-C10 ⊕ Applicable to D dimension 16 or more When a new keyway is added, the O.D. tolerance for the E part is always (-0.05). ⊕ Specify the C dimension not to be below b1. Keyway Dimension Table: Applicable Shaft End Dia. E b1 Reference Dimension Tolerance (H9) Reference Dimension Tolerance (h9) r1 10 3 -0.004 1.8 0 +0.1 0.08 12 4 -0.009 2.5 0 0 -0.16

⚠ Specify an alteration position to be 2mm or more away from the stepped part. (For details, see P.787.)

⚠ Do not specify multiple alterations in such a way that they overlap with each other in the rotating direction on the same shaft. (For details, see P.787.)

⚠ When flat machining, wrench flats, square chamfering and keyway alterations are combined with each other, their orientations will be random. (For details, see P.787.)

⚠ When adding multiple alterations, there must be 2mm or more clearance between each feature. (For details, see P.787.)

No Surface Treatment

Part Number	Type	D	Unit Price					
			Min. L ~ 200	L201~400	L401~600	L601~800	L801~1000	L1001~1200
MTWK MTWLK		12						
		14						
		16						
		18						
		20						
		22						

Black Oxide

Part Number	Type	D	Unit Price					
			Min. L ~ 200	L201~400	L401~600	L601~800	L801~1000	L1001~1200
MTWBK MTWBLK		12						
		14						
		16						
		18						
		20						
		22						

Right-Hand Thread / Left-Hand Thread, Stainless Steel

Part Number	Type	D	Unit Price					
			Min. L ~ 200	L201~400	L401~600	L601~800	L801~1000	L1001~1200
MTSWK MTSWLK		12						
		14						
		16						
		18						
		20						
		25						

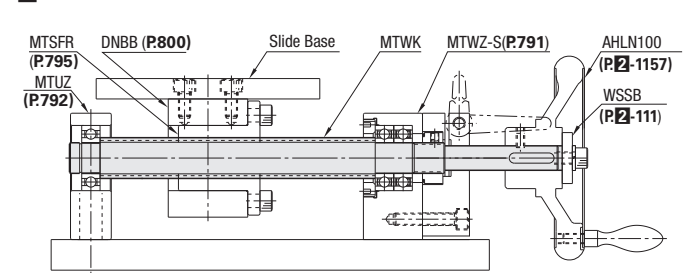
Low Temperature Black Chrome Plated Products

Part Number	Type	D	Unit Price					
			Min. L ~ 200	L201~400	L401~600	L601~800	L801~1000	
RMTWK RMTWLK		12						
		14						
		16						
		18						
		20						
		22						



Example

Slide Base Transfer Unit



Recommended Configuration

This unit allows the slide base for workpiece/fixture loading to be position-adjusted by manually rotating its lead screws manually. A dedicated lead screw, bearing unit and stopper clamp are combined in a set. P.791-794
 The unit can support radial and axial loads, and can be constructed more economically in a compact manner. Also, position indicators can be easily mounted.

Combined Parts Details

*MTUZ	Lead Screw Support Unit - Support Side
MTSFR	Lead Screw Nut - Flanged
DNBB	Nut Bracket for Lead Screw
MTWK	Lead Screw - For Support Units
MTWZ-S	Lead Screw Support Unit - Stop Plate Set
AHLN100	Five Spoked Handwheel
WSSB	Metal Washer

* For MTUZ, purchasing it in combination with MTWZ in set is more economical than when it is purchased as the separate unit. Details P.791

