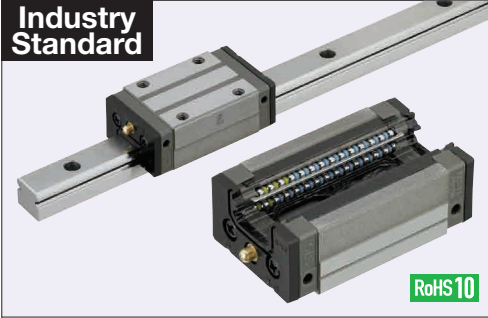


Linear Guides for Heavy Load - Stainless Steel

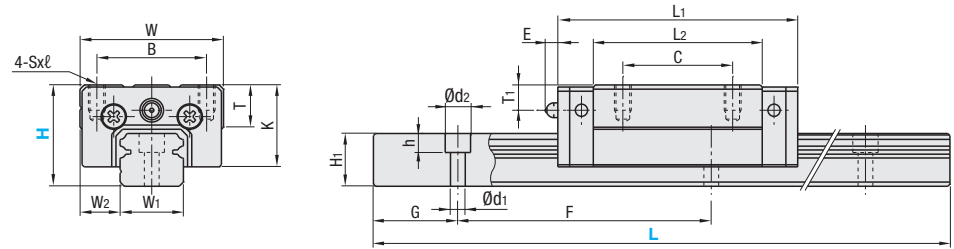
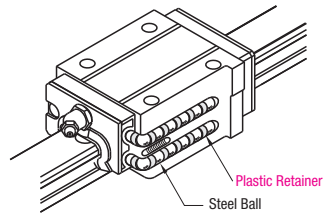
With Plastic Retainers, Interchangeable, Light Preload

Features: Linear Guides with Plastic Retainers prevent contact between balls and result in low noise levels under high-speed operation.



Material Hardness	Type		Block	Rail	L Dimension
	1 block	2 blocks			
Stainless Steel (SUS440C Equivalent) 57HRC~	SSXRZ	SSX2RZ	SSXRB	SSRZL	Selectable
	SSXRLZ	SSX2RLZ		SSRZLF	Configurable

Heat Resistant Temperature: 0 ~ 50°C



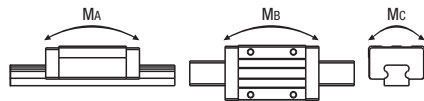
For L Configurable, G dimensions differ from those shown in the table below. For details, see P. 531.

- Precautions for Use**
 - Blocks are equipped with retainers to prevent balls from falling off. For how to handle the blocks, see P. 525.
 - For Interchangeable, Light Preload Type, rails and blocks can be interchanged.
 - Straight grooves are provided on datum planes. Be sure to match the datum lines when using.
 - Rails cannot be connected end to end.
 - The accuracy of Linear Guides is guaranteed after mounting the rail (after fastening screws on the rail and pushing it onto the datum plane).
 - Minor bending of the rail will be adjusted after being mounted and will not affect the performance.
- Others**
 - Filled with Lithium soap based grease (Alvania Grease S2 by Showa Shell Sekiyu K.K.).
 - Grease Fittings: Straight Type for H24 and Angled Type for H28 and H33.
 - Grease Fitting is screw-in type, and thus, can be repositioned.
 - For Operating Life Calculation, see P. 527
 - For operating life calculations, use our free calculation software from http://download.misumi.jp/mol/fa_soft.html.

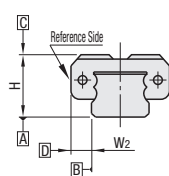
Part Number	Type		H	L	Block Dimension							Guide Rail Dimension									
	1 block	2 blocks			W	L ₁	B	C	Sxℓ	L ₂	K	T	Grease Fitting			H ₁	W ₁	W ₂	Counterbored Hole d _r x _d x _z x _h	F	G
	SSXRZ SSXRLZ	SSX2RZ SSX2RLZ											Mounting Hole	E	T ₁						
(Block)	(Rail)		24	100-1480 (160)	34	56.8	26	26	M4x6	40	19.4	10	Ø3	3	6	12.5	15	9.5	3.5x6x4.5	60	20
			28	160-1480 (220)	42	65.2	32	32	M5x7	48	22	12	M6xP0.75	11	5.5	15.5	20	11	6x9.5x8.5	60	20
			33	160-1480 (220)	48	81.6	35	35	M6x9	60	26	12	M6xP0.75	11	7	18	23	12.5	7x11x9	60	20

L Dimension: Dimensions in () are for 2-Block Type.

H	Basic Load Rating		Allowable Static Moment			Mass	
	C (Dynamic) kN	Co (Static) kN	MA N·m	Mb N·m	Mc N·m	Block kg	Guide Rail kg/m
24	7.9	15.6	74	62	78	0.20	1.4
28	11.1	21.8	124	104	149	0.28	2.3
33	17.9	33.5	242	203	266	0.51	3.1



Preload and Accuracy Standards



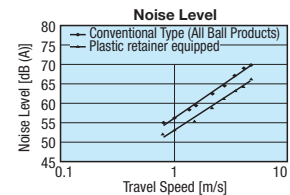
Interchangeable, Light Preload Type

Radial Clearance (µm)	
H24, 28	-4~-0
H33	-5~-0

Dimensional Accuracy (µm)	Interchangeable
Height H Tolerance	±20
Pair Variation of Height H	15
Width W ₂ Tolerance	±30
Pair Variation of Width W ₂	25
Running Parallelism of Plane C against Plane A	
Running Parallelism of Plane D against Plane B	

See P. 525

Features of Plastic Retainers: Low noise levels and improved sound quality



- Lack of mutual contact between balls results in low noise levels and improved sound quality.
- Since there is no mutual contact abrasion between the balls, particle generation is less than those of conventional products.

H	Selectable L	Unit Price			
		Set	Rail	Block	
24	100	SSXRZ	SSX2RZ	SSRZL	SSXRB
	160				
	220				
	280				
	340				
	400				
	460				
	520				
	580				
	640				
	700				
	760				
	820				
	880				
	940				
	1000				
	1060				
	1120				
1180					
1240					
1300					
1360					
1420					
1480					
28	160				
	220				
	280				
	340				
	400				
	460				
	520				
	580				
	640				
	700				
	760				
	820				
	880				
	940				
	1000				
	1060				
	1120				
	1180				
1240					
1300					
1360					
1420					
1480					
33	160				
	220				
	280				
	340				
	400				
	460				
	520				
	580				
	640				
	700				
	760				
	820				
	880				
	940				
	1000				
	1060				
	1120				
	1180				
1240					
1300					
1360					
1420					
1480					

H	Unit Price		
	Set	Rails	
24	SSXRLZ	SSX2RLZ	SSRZLF
28			
33			

For calculation of L Dimension Configurable Type (1mm Increment), add the above amount to the unit price of the Selectable Type longer than, and closest to this L Dimension Configurable Type.

Ordering Example: Part Number - L
SSXRZ28 - 640

Alterations Example: Part Number - L - (RLC, LLC...etc.)
SSXRZ28 - 640 - RLC

Alterations	Code	Spec.
Rail End Cut LLC	Left End Cut LLC	Cuts rail ends. Ordering Code LLC
		H L Cut N
		24 10 10
		28 10 10
		33 10 10
		Applicable to Selectable Type only.
		Overall length will be shorter by cutting.
3-Block Specifications	B3	Add 2 blocks to 1-Block product to ship as 3-Block separate item. Selection Example: SSXRZ24-400-B3
4-Block Specifications	B4	Add 3 Blocks to 1-Block product to ship as 4-Block separate item. Selection Example: SSXRZ24-400-B4

Position of Grease Fitting (Reference plane on the front side)	Additional Block Price	
	H	1 Code
1 block		B3 B4
2 blocks	24	
	28	
	33	
3 blocks		
4 blocks		
		Selectable Shortest Rail Length for B3/B4
	H	B3 (3-Block) B4 (4-Block)
	24	340 400
	28	400 460
	33	400 520

Options for Linear Guide

Linear Guide Clamps	Rail Height Adjusting Blocks
P608	P609, 610
Block Derailment Prevention Parts / Dust Resistant Parts	Block / Rail Fixing Parts
Stopper Bolts	Rail Push Plates
P612	P612
Block Stopper Plates	Linear Locks
P612	P613
Rail Mounting Hole Caps	Linear Guide Lock Units
P612	P614