

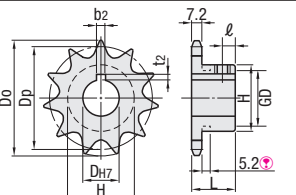
Standard Sprockets

40B Series

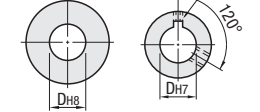


Type	Material	Surface Treatment
SP40B	S45C Equivalent	-
BSP40B	(Induction Hardened Teeth Tip)	Black Oxide
SSP40B	SUS304 Equivalent	-

Accessory: Set Screw
(Only for shaft bore specifications [N])



Shaft Bore Specs. **S** (Pilot Bore) Shaft Bore Specs. **N** (New JIS Key + Tap)



Offset between tooth tip and keyway is ±0.5mm. For the 12 or less teeth, sprockets have grooves on hub O.D.



Part Number	Shaft Bore Specs.	Number of Teeth	Shaft Bore Dia.		Dp	Do	H	GD	L	l	Mass (g)	Unit Price			
			Specification (Dh)	N Specification (Dh7)								S Specification	N Spec. (In Stock)	N Spec. (Other than In Stock)	
SP40B	S	9	10K* 12* 14*		37.13	42	28	23	22	5	110				
		10	10K* 12* 14 15* 16* 17*		41.1	46	32	27			140				
		11	10K* 12* 14 15* 16* 17* 18*		45.08	51	36	31			190				
		12	10K* 12* 14 15* 16* 17* 18* 19 20*		49.07	55	40	35			220				
		13	12* 14 15* 16* 17* 18* 19 20* 22		53.07	59	37				230				
		14	12* 14 15* 16* 17* 18* 19 20* 22* 24*		57.07	63	42				280				
		15	12* 14 15* 16* 17* 18* 19* 20* 22* 24 25*		61.08	67	46				340				
		16	14* 15* 16* 17* 18* 19* 20* 22* 24 25* 28* 30		65.1	71	50				400				
		17	14* 15* 16* 17* 18* 19* 20* 22* 24 25* 28* 30* 32* 35*		69.12	76	54				460				
		18	14 15* 16* 17* 18 19 20* 22* 24* 25* 28* 30* 32 35 40*		73.14	80	57				510				
		19	14 15* 16* 17 18 19* 20* 22 24 25* 28 30* 32 35 40*		77.16	84	62				590				
		20	14* 15* 16 17 18* 19* 20* 22* 24 25* 28* 30* 32* 35 40		81.18	88	67				760				
		21	14 15 16 17 18 19 20* 22 24 25* 28 30 32 35 40		85.21	92	71				850				
		22	14 15 16 17 18 19 20* 22 24 25* 28* 30* 32 35 40		89.24	96	75				950				
		23	14 15 16 17 18 19 20 22 24 25* 28 30* 32 35 40*		93.27	100	77				1000				
		24	14 15* 16 17 18 19 20* 22 24 25* 28 30* 32 35 40*		97.3	104					840				
		25	14 15* 16 17 18 19 20* 22 24 25* 28 30* 32 35 40*		101.33	108					880				
		26	14 15 16 17 18 19 20* 22 24 25 28 30* 32 35 40		105.36	112	63				920				
		28	14 15 16 17 18 19 20 22 24 25 28 30 32 35 40		113.43	120					1000				
		30	20 22 24 25 28 30 32 35 40		121.5	128					1100				
	32	20 22 24 25 28 30 32 35 40		129.57	137			1200							
	34	20 22 24 25 28 30 32 35 40		137.64	145			1300							
	35	20 22 24 25 28 30 32 35 40		141.68	149	68		1400							
	36	20 22 24 25 28 30 32 35 40		145.72	153			1500							
	38	24 25 28 30 32 35 40		153.79	161			1600							
	40	25 28 30 32 35 40		161.87	169			1700							
	BSP40B (BSP is not compliant with S Spec.)	N	9	10K 12 14		37.13	42	28	23	22	5	110			
			10	10K 12* 14 15* 16 17*		41.1	46	32	27			140			
			11	10K 12* 14 15 16 17* 18*		45.08	51	36	31			190			
			12	10K 12* 14 15* 16 17* 18* 19 20*		49.07	55	40	35			220			
			13	12* 14 15* 16 17* 18* 19 20* 22		53.07	59	37				230			
			14	12* 14 15* 16 17 18 19 20* 22 24 25		57.07	63	42				280			
			15	12 14 15* 16 17 18* 19 20* 22 24 25 28 30		61.08	67	46				340			
			16	14 15 16 17 18 19 20* 22 24 25 28 30 32 35 40		65.1	71	50				400			
			17	14 15 16 17 18 19 20* 22 24 25 28 30 32 35 40		69.12	76	54				460			
			18	14 15 16 17 18 19 20* 22 24 25 28 30 32 35 40		73.14	80	57				510			
			19	14 15 16 17 18 19 20* 22 24 25 28 30 32 35 40		77.16	84	62				590			
			20	14 15 16 17 18 19 20 22 24 25 28 30 32 35 40		81.18	88	67				760			
			21	14 15 16 17 18 19 20 22 24 25 28 30 32 35 40		85.21	92	71				850			
			22	14 15 16 17 18 19 20 22 24 25 28 30 32 35 40		89.24	96	75				950			
23			14 15 16 17 18 19 20 22 24 25 28 30 32 35 40		93.27	100	77		1000						
24			14 15 16 17 18 19 20 22 24 25 28 30 32 35 40		97.3	104			840						
25			14 15 16 17 18 19 20 22 24 25 28 30 32 35 40		101.33	108			880						
26			14 15 16 17 18 19 20 22 24 25 28 30 32 35 40		105.36	112	63		920						
28			14 15 16 17 18 19 20 22 24 25 28 30 32 35 40		113.43	120			1000						
30			20 22 24 25 28 30 32 35 40		121.5	128			1100						
32		20 22 24 25 28 30 32 35 40		129.57	137			1200							
34		20 22 24 25 28 30 32 35 40		137.64	145			1300							
35		20 22 24 25 28 30 32 35 40		141.68	149	68		1400							
36		20 22 24 25 28 30 32 35 40		145.72	153			1500							
38		24 25 28 30 32 35 40		153.79	161			1600							
40		25 28 30 32 35 40		161.87	169			1700							
SSP40B		S	9	12*		41.1	46	32	27	22	5	140			
			10	15 16		45.08	51	36	31			190			
			11	15* 16*		49.07	55	40	35			220			
			12	15* 16 18 20*		53.07	59	37				230			
			14	15* 16 18* 19 20* 22 24 25		57.07	63	42				280			
			15	15* 16 18 19 20* 22 24 25* 28 30		61.08	67	46				340			
			16	15* 16 18 19 20* 22 24 25* 28 30		65.1	71	50				400			
			17	15 16 18 19 20* 22 24 25 28 30		69.12	76	54				460			
			18	15 16 18 19 20 22 24 25 28 30		73.14	80	57				510			
			19	15* 16 18 19 20 22 24 25* 28 30		77.16	84	62				590			
			20	15* 16 18 19 20 22 24 25* 28 30		81.18	88	67				760			
			21	14 15 16 18 20 22 24 25 28 30		85.21	92	71				850			
			22	14 15 16 18 20 22 24 25 28 30		89.24	96	75				950			
			23	14 15 16 18 20 22 24 25 28 30		93.27	100	77				1000			
	24		14 15 16 18 20 22 24 25 28 30		97.3	104			840						
	25		14 15 16 18 20 22 24 25 28 30		101.33	108			880						
	26		14 15 16 18 20 22 24 25 28 30		105.36	112	63		920						
	28		14 15 16 18 20 22 24 25 28 30		113.43	120			1000						
	30		20 22 24 25 28 30		121.5	128			1100						
	32		20 22 24 25 28 30		129.57	137			1200						
	34	20 22 24 25 28 30		137.64	145			1300							
	35	20 22 24 25 28 30		141.68	149	68		1400							
	36	20 22 24 25 28 30		145.72	153			1500							
	40	20 22 24 25 28 30		161.87	169			1700							
	N	9	12*		41.1	46	32	27	22	5	140				
		10	15 16		45.08	51	36	31			190				
		11	15* 16*		49.07	55	40	35			220				
		12	15* 16 18 20*		53.07	59	37				230				
		14	15* 16 18* 19 20* 22 24 25		57.07	63	42				280				
		15	15* 16 18 19 20* 22 24 25* 28 30		61.08	67	46				340				
		16	15* 16 18 19 20* 22 24 25* 28 30		65.1	71	50				400				
		17	15 16 18 19 20* 22 24 25 28 30		69.12	76	54				460				
		18	15 16 18 19 20 22 24 25 28 30		73.14	80	57				510				
		19	15* 16 18 19 20 22 24 25* 28 30		77.16	84	62				590				
		20	15* 16 18 19 20 22 24 25* 28 30		81.18	88	67				760				
		21	14 15 16 18 20 22 24 25 28 30		85.21	92	71				850				
		22	14 15 16 18 20 22 24 25 28 30		89.24	96	75				950				
		23	14 15 16 18 20 22 24 25 28 30		93.27	100	77				1000				
		24	14 15 16 18 20 22 24 25 28 30		97.3	104					840				
		25	14 15 16 18 20 22 24 25 28 30		101.33	108					880				
26		14 15 16 18 20 22 24 25 28 30		105.36	112	63		920							
28		14 15 16 18 20 22 24 25 28 30		113.43	120			1000							
30		20 22 24 25 28 30		121.5	128			1100							
32		20 22 24 25 28 30		129.57	137			1200							
34	20 22 24 25 28 30		137.64	145			1300								
35	20 22 24 25 28 30		141.68	149	68		1400								
36	20 22 24 25 28 30		145.72	153			1500								
40	20 22 24 25 28 30		161.87	169			1700								

The H7 D dim. tolerance is applicable for the Shaft Bore Specs S with the number of teeth: 13-15 or 19-25. For the Number of