

Anti-Vibration Rubber Mounts



Both Ends Threaded Type
P.1483



Both Ends Tapped Type
P.1484



1 Tapped Hole and
1 Threaded Stud Type
P.1485



Male Thread on One Side
P.1486

P.1481

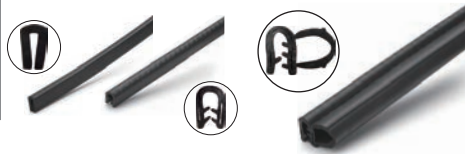


Tapped on One Side
P.1487



Anti-Collision Type
P.1488

Trims



P.1489

Rectangle Shaped /
U Shaped Type
P.1489

With Rubber Sealing Molds
P.1490

Sealed Flushing Cabinets

Application Industries: **Semiconductor** **Electronic & Electrical**



This figure shows a flushing cabinet sealed with trims to ensure no leakage at the cabinet door during cleaning.

In order to reduce the impact of the vibration of the flushing cabinet on the overall structure of the flushing cabinet on the overall structure of the equipment during operation, the anti-vibration rubber mount is used for shock absorption.

Reference price

01 Trims × 1 P.1489



Rectangle Shaped
Applicable Plate Thickness
Range 1mm~1.6mm
C-CTRTE1.6-L100

1,471
THB/roll

Quantity	Unit price	Total price
1	1,471	1,471
4	1,251	5,004

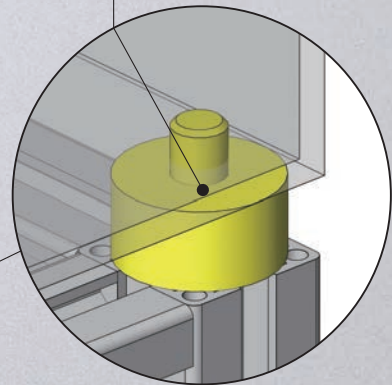
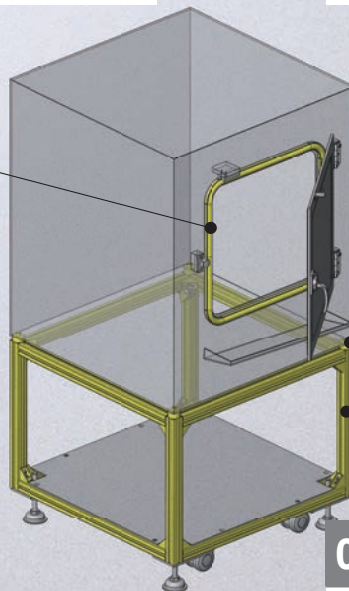
02 Anti-Vibration Rubber Mount × 4 P.1483



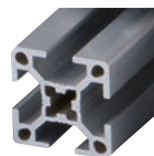
O.D. 20mm
Height 20mm
Connecting Thread Specification M6
C-VV2020-18

33
THB/pcs

Quantity	Unit price	Total price
1	33	33
30	28	840



03 Aluminum Frame × 12 P.1191



Frame Type Standard
Frame Section 3030
Total Length 400mm
NEFS6-3030-400

72
THB/pcs

Quantity	Unit price	Total price
1	72	72
10	69	690

* All products prices are without tax. For prices reference, please visit MISUMI official website.

* The reference price is estimated based on the quantity or approximate length of the product used in the example, and is not calculated as a starting price.

Economy series Anti-Vibration Rubber Mounts

A well deserved
cost-effective choice

Various Categories

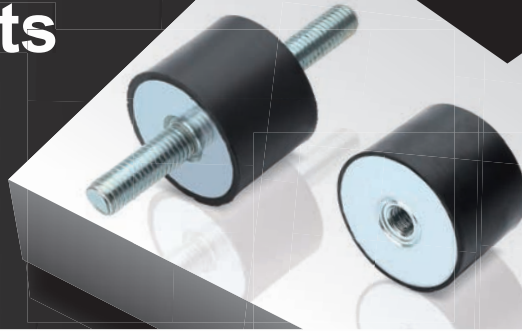
Cost-Effective and Durable

Stable Anti-Vibration Effect





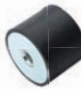


vs Standard Type

Saving
up to

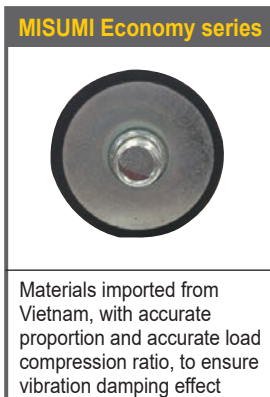
79%



■ A variety of new installation types, with a complete range and full specifications

	Both Ends			One End		Other	
Appearance							
	Threaded Type	Tapped Type	Tapped and Threaded	Threaded Type	Tapped Type	Anti-Collision Type	Panel Mounting Type
MISUMI standard product	•		•				•
MISUMI Economy series	•	•	•	•	•	•	

■ Selection of high-quality rubber, fine workmanship, to ensure vibration damping performance



■ Additional surface treatment for longer service life

· Test results after MISUMI economy series all passed the 72 hour salt spray test with the same conditions

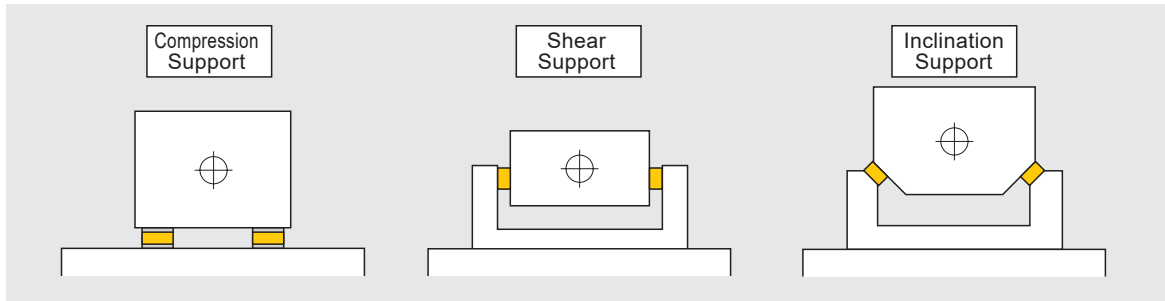


* Generic products on the market are similar products randomly purchased by our company from online or offline markets

* The test data are obtained through testing by our company, which are for reference only.

Example of Customer Use

- Suitable for the prevention and weakening of vibration phenomena generated by vibrating equipment. For example, anti-vibration rubber mount is often used to prevent the impact of external vibration factors on precision equipment



Selection Method

STEP 1

Determine spring constant

- Assuming that the equipment is now vibrating in the vertical direction under force, The formula for the conductivity Tr is as follows:

$$U = \frac{f}{fn}$$

u: Vibration ratio
f: Vibration number of the machine itself (Hz)
fn: The number of inherent vibrations during machine damping (Hz)

$$Tr = \frac{F}{FO} = \left| \frac{1}{1-U^2} \right|$$

F: Exciting force transmitted by the machine to the base (N)
Fo: Exciting force of the machine itself (N)

- Tr is the conductivity, and the vibration damping effect is available only when the conductivity is < 1 , that is $u > \sqrt{2}$
* When $u=2-4$, that is, when the conductivity is 7%~33%, the vibration damping effect is the best
- The anti-vibration rubber mount can be selected by calculating the appropriate spring constant Ks according to the following formula

$$ks = \frac{(2\pi f)^2 m}{u^2 \times \alpha \times 1000}$$

m: Machine mass (kg)
 α : When the Shore hardness of natural rubber is 60, α is 1.4

* The above formula requires confirmation of the weight m of the equipment above the anti-vibration rubber mount, the vibration number f of the machine itself and the desired vibration number fn (after vibration damping).

STEP 2

Select the appropriate installation type of anti-vibration rubber mount

STEP 3

Select the appropriate size of anti-vibration rubber mount

Model Selection

Example

- The weight m of the vibration-damping machinery required by the customer is 100kg, the number of vibrations f occurring in the machinery is 16Hz, and fn is 8Hz
Calculate according to the formula

$$ks = \frac{(2\pi \times 16)^2 \times 100}{2^2 \times 1.4 \times 1000} = 180(\text{N/mm})$$

The spring constant of 180N/mm is obtained.

- Depending on how the equipment is mounted, two external threads are required.

Selected C-VV Series

Required thread specification M6, height 20mm

Selected model: C-VV2520-18

Representative model: C-VV2020-18

Save Up to **74%**
vs Standard Type

Shipping from **1 day**



33

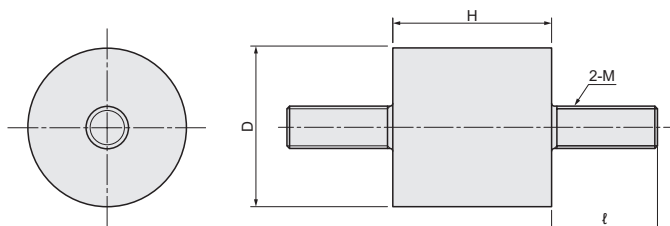
THB

Volume Discount

Quantity	1~29	30~49	50~
Discount	Unit Price	15%	30%



Shipping days may differ by Quantity.
Quantity of volume discount above is for representative Part No. It may differ by the Part.



Material : Body: Rubber
Metal Fittings: Steel
Hardness : Shore A60
Surface Treatment : Zinc Plating

20

Anti-Vibration Rubber Mounts / Trims

Anti-Vibration Rubber Mounts
P.1481

Trims

P.1489

Part Number		Connecting Thread M	ℓ	O.D. D	Height H	Shore A60							
1 Type	2 No.					Z Direction				X Direction		Rigidity Ratio	
						Allowable Load		Standard Load		Spring Constant	Allowable Load		
		N	{kgf}	N	{kgf}	N/mm	{kgf/cm}	N	{kgf}	kx/kz			
C-VV	0808-6	3	6	8	8	92	9.2	28-88	2.8-8.8	55	18	1.8	0.2
	1508-10	4	10	15	15	120	12	36-116	3.6-11.6	72	24	2.4	
	1615-10			16	15	258	25.8	40-246	4-24.6	82	62	6.2	0.24
	2008-18	6	18	20	8	588	58.8	180-560	18-56	350	141	14.1	
	2015-18				15	447	44.7	70-426	7-42.6	142	72	7.2	
	2020-18			20	340	34	40-324	4-32.4	81	61	6.1	0.18	
	2030-18			30	233	23.3	20-222	2-22.2	37	37	3.7	0.16	
	2515-18			25	15	594	59.4	190-566	19-56.6	283	131	13.1	0.22
	2520-18				20	760	76	90-724	9-72.4	181	152	15.2	0.2
	2530-18	30	510	51	40-486	4-48.6	81	82	8.2	0.16			
	3015-20	8	20	30	15	1175	117.5	190-1119	19-111.9	373	282	28.2	0.24
	3020-20				20	1000	100	140-952	14-95.2	238	200	20	0.2
	3025-20			25	725	72.5	70-690	7-69	138	123	12.3	0.17	
	3030-20			30	680	68	60-648	6-64.8	108	109	10.9	0.16	
	4020-23	23	40	40	20	2020	202	240-1924	24-192.4	481	404	40.4	0.2
	4025-23				25	1774	177.4	338-1690	33.8-169	338	319	31.9	0.18
	4030-23			30	1499	149.9	120-1428	12-142.8	238	270	27		
	4040-25			10	25	40	1260	126	80-1200	8-120	150	202	20.2
	5030-25	30	3150			315	250-3000	25-300	500	567	56.7	0.18	
	5050-25	50	1420			142	90-1352	9-135.2	169	284	28.4	0.2	

Ordering Example

Please order after selecting part number and parameters according to the selection steps 1 to 2.

Part Number (1 Type · 2 No.)

C-VV2020-18

How to search on website



By Type

Search on MISUMI official website

C-VV

By Keyword

Step 1 Search on MISUMI official website

anti vib rubber

Step 2 Select MISUMI economy series brand

MISUMI



MISUMI contact

Tel: 038-959200 or 1382
Email: cs@misumi.co.th

MISUMI WEB "Chat"



Install MISUMI APP



Representative model: C-DD2020-6



41

THB

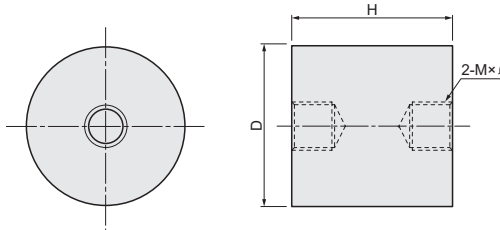


Volume Discount

Quantity	1~29	30~49	50~
Discount	Unit Price	15%	30%



Shipping days may differ by Quantity.
Quantity of volume discount above is for representative Part No. It may differ by the Part.



Material : Body: Rubber
Metal Fittings: Steel
Hardness : Shore A60
Surface Treatment : Zinc Plating

Part Number		Connecting Thread M	ℓ	O.D. D	Height H	Shore A60								
1 Type	2 No.					Z Direction				X Direction		Rigidity Ratio		
						Allowable Load		Standard Load		Spring Constant	Allowable Load			
				N	{kgf}	N	{kgf}	N/mm {kgf/cm}	N	{kgf}	kx/kz			
C-DD	1413-4	4	4	14	13	215	21.5	37-204	3.7-20.4	73	47	4.7	0.22	
	1615-4					271	27.1	43-258	4.3-25.8	86	60	6		
	2015-6	6	6	20	15	466	46.6	74-444	7.4-44.4	148	103	10.3	0.16	
	2020-6					361	36.1	43-344	4.3-34.4	86	58	5.8		
	2025-6					299	29.9	29-285	2.9-28.5	57	54	5.4		
	2030-6					239	23.9	19-228	1.9-22.8	38	38	3.8		
	2515-6					15	945	94.5	150-900	15-90	300	208		20.8
	2520-6					20	815	81.5	97-776	9.7-77.6	194	163		16.3
	2525-6	25	625	62.5	60-595	6-59.5	119	112	11.2	0.18				
	2530-6	30	561	56.1	45-534	4.5-53.4	89	90	9					
	3020-8	8	8	30	20	1008	100.8	120-960	12-96	240	202	20.2	0.2	
	3025-8					777	77.7	74-740	7.4-74	148	140	14		
	3030-8					725	72.5	58-690	5.8-69	115	116	11.6		
	3040-8					40	680	68	41-648	4.1-64.8	81	136		13.6
	4020-8					20	2134	213.4	254-2032	25.4-203.2	508	384		38.4
	4028-8					28	1664	166.4	142-1585	14.2-158.5	283	266		26.6
	4030-8	30	1575	157.5	125-1500	12.5-150	250	252	25.2	0.16				
	4040-10	40	1161	116.1	79-1106	7.9-110.6	158	186	18.6					
	5030-10	10	10	50	30	2751	275.1	262-2620	26.2-262	524	605	60.5	0.22	
	5050-10					1869	186.9	89-1780	8.9-178	178	336	33.6		

Ordering Example Please order after selecting part number and parameters according to the selection steps 1 to 2.

Part Number (1 Type · 2 No.)
C-DD2020-6

How to search on website

By Type: Search on MISUMI official website

By Keyword: Step 1 Search on MISUMI official website Step 2 Select MISUMI economy series brand

MISUMI MISUMI economy

MISUMI contact
Tel: 038-959200 or 1382
Email: cs@misumi.co.th

MISUMI WEB "Chat"

Install MISUMI APP

Representative model: C-VD2020-18

Save Up to **79%**
vs Standard Type

Shipping
from
1 day



35

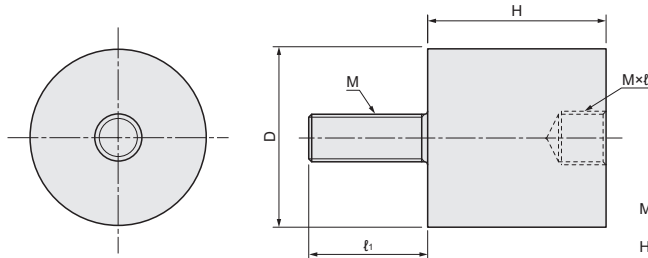
THB

Volume Discount

Quantity	1~29	30~49	50~
Discount	Unit Price	15%	30%



Shipping days may differ by Quantity.
Quantity of volume discount above is for representative Part No. It may differ by the Part.



Material : Body: Rubber
Metal Fittings: Steel
Hardness : Shore A60
Surface Treatment: Zinc Plating

Part Number		Connecting Thread M	l ₁	l ₂	O.D. D	Height H	Shore A60														
1 Type	2 No.						Z Direction				X Direction		Rigidity Ratio								
							Allowable Load		Standard Load		Spring Constant N/mm {kgf/cm}	Allowable Load									
		N	{kgf}	N	{kgf}	N	{kgf}	cx/kx	kz/kz												
C-VD	0808-6	3	6	3	8	8	121	12.1	36-115	3.6-11.5	72	24	2.4	0.2							
	1008-10	4	10	4	10	8	123	12.3	37-117	3.7-11.7	73	25	2.5								
	1615-10	4	10	4	16	15	268	26.8	43-225	4.3-22.5	85	64	6.4	0.24							
	2015-18						460	46	73-438	7.3-43.8	146	110	11								
	2020-18						6	18	6	20	20	353	35.3		42-336	4.2-33.6	84	56	5.6	0.16	
	2025-18										25	294	29.4		28-280	2.8-28	56	53	5.3		0.18
	2030-18										30	239	23.9		19-228	1.9-22.8	38	38	3.8		
	2515-18										15	1235	123.5		147-1176	14.7-117.6	294	272	27.2		0.22
	2520-18	6	18	6	25	20	790	79	94-752	9.4-75.2	188	158	15.8	0.2							
	2530-18					30	536	53.6	43-510	4.3-51	85	86	8.6	0.16							
	3015-20	8	20	8	30	15	1203	120.3	191-1146	19.1-114.6	382	289	28.9	0.24							
	3020-20					20	941	94.1	112-896	11.2-89.6	224	188	18.8	0.2							
	3025-20					25	751	75.1	72-715	7.2-71.5	143	128	12.8	0.17							
	3030-20					30	706	70.6	56-672	5.6-67.2	112	113	11.3	0.16							
	4020-23	8	23	8	40	20	2075	207.5	247-1976	24.7-197.6	494	415	41.5	0.2							
	4025-23					25	1827	182.7	174-1740	17.4-174	348	329	32.9	0.18							
	4030-23					30	1550	155	123-1476	12.3-147.6	246	248	24.8	0.16							
	4040-25					40	1285	128.5	77-1224	7.7-122.4	153	231	23.1	0.18							
	5030-25	10	25	10	50	30	3251	325.1	258-3096	25.8-309.6	516	715	71.5	0.22							
	5050-25					50	1817	181.7	87-1730	8.7-173	173	363	36.3	0.2							

Ordering Example

Please order after selecting part number and parameters according to the selection steps 1 to 2.

Part Number (1 Type · 2 No.)
C-VD2020-18

How to search on website



By Type

Search on MISUMI official website

C-VD

By Keyword

Step 1 Search on MISUMI official website

anti vib rubber

Step 2 Select MISUMI economy series brand

MISUMI



MISUMI contact

Tel: 038-959200 or 1382
Email: cs@misumi.co.th

MISUMI WEB "Chat"



Install MISUMI APP



Representative model: C-VE2020-18



28

THB

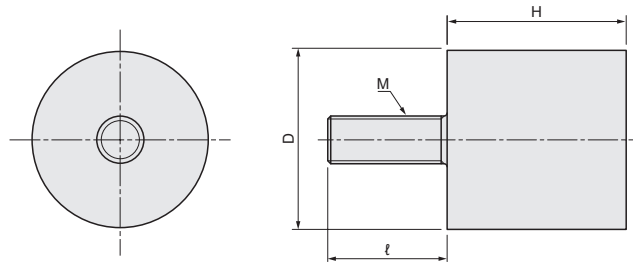


Volume Discount

Quantity	1~29	30~49	50~
Discount	Unit Price	15%	30%



Shipping days may differ by Quantity.
Quantity of volume discount above is for representative Part No. It may differ by the Part.



Material : Body: Rubber
Metal Fittings: Steel
Hardness : Shore A60
Surface Treatment : Zinc Plating

Part Number		Connecting Thread M	l	O.D. D	Height H	Shore A60								
1 Type	2 No.					Z Direction				X Direction		Rigidity Ratio		
						Allowable Load		Standard Load		Spring Constant N/mm {kgf/cm}	Allowable Load			
		N	{kgf}	N	{kgf}	N	{kgf}	kgx/kz						
C-VE	0808-6	3	6	8	8	92	9.2	28-88	2.8-8.8	55	18	1.8	0.24	
	1508-10	4	10	15		395	39.5	120-376	12-37.6	235	95	9.5		
	1615-10			16	258	25.8	40-246	4-24.6	82	62	6.2			
	2008-18	6	18	20	8	588	58.8	180-560	18-56	350	141	14.1	0.16	
	2015-18				15	447	44.7	70-426	7-42.6	142	72	7.2		
	2020-18				20	340	34	40-324	4-32.4	81	61	6.1		
	2030-18			30	233	23.3	20-222	2-22.2	37	37	3.7			
	2515-18			25	15	594	59.4	190-566	19-56.6	283	131	13.1		0.22
	2520-18				20	760	76	90-724	9-72.4	181	152	15.2		0.2
	2530-18	30	510		51	40-486	4-48.6	81	82	8.2	0.16			
	3015-20	8	20	30	15	1175	117.5	190-1119	19-111.9	373	282	28.2	0.24	
	3020-20				20	1000	100	140-952	14-95.2	238	200	20	0.2	
	3025-20				25	725	72.5	70-690	7-69	138	123	12.3	0.17	
	3030-20			30	680	68	60-648	6-64.8	108	109	10.9	0.16		
	4020-23			23	40	20	2020	202	240-1924	24-192.4	481	404	40.4	0.2
	4025-23	25	1774			177.4	338-1690	33.8-169	338	319	31.9	0.18		
	4030-23	30	1499			149.9	120-1428	12-142.8	238	270	27			
	4040-25	10	25	50	40	1260	126	80-1200	8-120	150	202		20.2	0.16
	5030-25				30	3150	315	250-3000	25-300	500	567	56.7	0.18	
	5050-25				50	1420	142	90-1352	9-135.2	169	284	28.4	0.2	

Ordering Example Please order after selecting part number and parameters according to the selection steps ① to ②.
Part Number (①Type · ②No.)
C-VE2020-18

How to search on website

By Type: Search on MISUMI official website

By Keyword: Step 1 ▶ Search on MISUMI official website Step 2 ▶ Select MISUMI economy series brand MISUMI MISUMI economy

MISUMI contact
Tel: 038-959200 or 1382
Email: cs@misumi.co.th

MISUMI WEB "Chat"

Install MISUMI APP

20
Anti-Vibration Rubber Mounts / Trims
Anti-Vibration Rubber Mounts
P.1481
Trims
P.1489

Representative model: C-DE2020-6



31

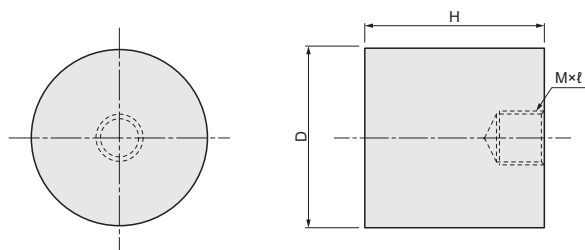
THB



Volume Discount

Quantity	4~29	30~49	50~
Discount	Unit Price	15%	30%

Shipping days may differ by Quantity.
Quantity of volume discount above is for representative Part No. It may differ by the Part.



Material : Body: Rubber
Metal Fittings: Steel
Hardness : Shore A60
Surface Treatment : Zinc Plating

Part Number		Connecting Thread M	ℓ	O.D. D	Height H	Shore A60								
1 Type	2 No.					Z Direction				X Direction		Rigidity Ratio		
						Allowable Load		Standard Load		Spring Constant	Allowable Load			
		N	{kgf}	N	{kgf}	N/mm	{kgf/cm}	N	{kgf}	kx/kz				
C-DE	0808-3	3	3	8	8	121	12.1	36-115	3.6-11.5	72	24	2.4	0.2	
	1008-4	4	4	10		123	12.3	37-117	3.7-11.7	73	25	2.5		
	1615-4	6	6	16	15	268	26.8	43-225	4.3-22.5	85	64	6.4	0.24	
	2015-6			460		46	73-438	7.3-43.8	146	110	11			
	2020-6			20		353	35.3	42-336	4.2-33.6	84	56	5.6		0.16
	2025-6			25		294	29.4	28-280	2.8-28	56	53	5.3		0.18
	2030-6			30		239	23.9	19-228	1.9-22.8	38	38	3.8		0.16
	2515-6			15		1235	123.5	147-1176	14.7-117.6	294	272	27.2		0.22
	2520-6	25	20	790	79	94-752	9.4-75.2	188	158	15.8	0.2			
	2530-6		30	536	53.6	43-510	4.3-51	85	86	8.6	0.16			
	3015-8	8	8	15	15	1203	120.3	191-1146	19.1-114.6	382	289	28.9	0.24	
	3020-8			20		941	94.1	112-896	11.2-89.6	224	188	18.8	0.2	
	3025-8			25		751	75.1	72-715	7.2-71.5	143	128	12.8	0.17	
	3030-8			30		706	70.6	56-672	5.6-67.2	112	113	11.3	0.16	
	4020-8			20		2075	207.5	247-1976	24.7-197.6	494	415	41.5	0.2	
	4025-8			25		1827	182.7	174-1740	17.4-174	348	329	32.9	0.18	
	4030-8	40	30	1550	155	123-1476	12.3-147.6	246	248	24.8	0.16			
	4040-10		40	1285	128.5	77-1224	7.7-122.4	153	231	23.1	0.18			
	5030-10	10	10	30	30	3251	325.1	258-3096	25.8-309.6	516	715	71.5	0.22	
	5050-10			50		1817	181.7	87-1730	8.7-173	173	363	36.3	0.2	

Ordering Example

Please order after selecting part number and parameters according to the selection steps 1 to 2.

Part Number (1 Type · 2 No.)
C-DE2020-6



By Type
Search on MISUMI official website
C-DE

By Keyword
Step 1 Search on MISUMI official website
anti vib rubber

Step 2 Select MISUMI economy series brand
MISUMI economy

MISUMI contact

Tel: 038-959200 or 1382
Email: cs@misumi.co.th

MISUMI WEB "Chat"



Install MISUMI APP



Representative model: C-VP2425-18



50

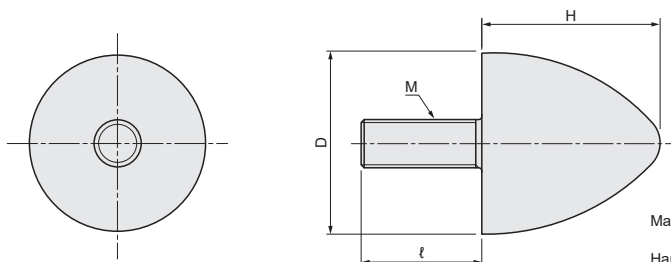
THB

Volume Discount

Quantity	1~29	30~49	50~
Discount	Unit Price	15%	30%



Shipping days may differ by Quantity.
Quantity of volume discount above is for representative Part No. It may differ by the Part.



Material : Body: Rubber
Metal Fittings: Steel
Hardness : Shore A60
Surface Treatment: Zinc Plating

Part Number		Connecting Thread M	ℓ	O.D. D	Height H	Maximum Allowable Load N	Standard Load N	Spring Constant N/mm{kgf/cm}
1 Type	2 No.							
C-VP	2425-18	6	18	24	25	300	28-280	56
	3030-14		14	30	30	310	25-294	49
	5050-23	8	23	50	50	900	43-850	85

Ordering Example

Please order after selecting part number and parameters according to the selection steps 1 to 2.

Part Number (1 Type · 2 No.)

C-VP2425-18

How to search on website



By Type

Search on MISUMI official website

C-VP

By Keyword

Step 1 Search on MISUMI official website

anti vib rubber

Step 2 Select MISUMI economy series brand



MISUMI contact

Tel: 038-959200 or 1382
Email: cs@misumi.co.th

MISUMI WEB "Chat"



Install MISUMI APP



20

Anti-Vibration Rubber Mounts / Trims

Anti-Vibration Rubber Mounts P.1481

Trims

P.1489

Representative model: C-CTRTE1.6-L100

Save Up to **73%** vs Standard Type

Shipping from **1 day**

1,471 THB

Volume Discount

Quantity	1~3	4~5	6~
Discount	Unit Price	15%	30%



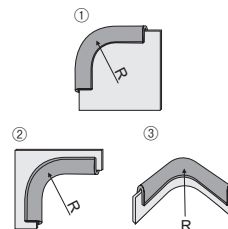
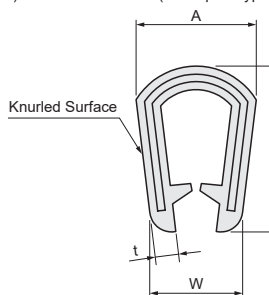
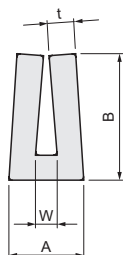
Shipping days may differ by Quantity.
Quantity of volume discount above is for representative Part No. It may differ by the Part.

Type	Type	Body	Metal core
C-CTRTE	Rectangle Shaped	Ethylene Propylene Rubber (EPDM)	-
C-TRAT	U Shaped Type	PVC	Steel Sheet (Q195)

C-CTRTE (Rectangle Shaped)

C-TRAT (U Shaped Type)

Bending Direction



Rectangle Shaped Type

Part Number		③ Length	Applicable Plate Thickness Range	A	B	W	t	Min. Bending Radius		
① Type	② Nominal Specification							Bending Direction ①	Bending Direction ②	Bending Direction ③
C-CTRTE	1.6	100 (100m/roll)	1.0~1.6	4.5	7.6	1.3	1.6	100	80	20
	2.6		2.0~2.6	6.1	10.3	2.3	1.9	125		

U Shaped Type Trims

Part Number		③ Length	Applicable Plate Thickness Range	A	B	W	t	Min. Bending Radius		
① Type	② Nominal Specification							Bending Direction ①	Bending Direction ②	Bending Direction ③
C-TRAT	1.8	50 (50m/roll)	0.8~1.8	7	10	6.6	1.6	50	30	30
	3.2		1.9~3.2	9.7	13.4	7.4	1.9	70	40	40
	4.8		3.3~4.8	10.8	17.2	8.3	125	70	60	

① This product is sold in rolls.

② The minimum bending radius is the test value, not the guaranteed value of product performance. For reference only

Ordering Example

Please order after selecting part number and parameters according to the selection steps ① to ③.

Part Number (① Type · ② Specifications) - ③ Length
C-CTRTE1.6 - L100

How to search on website

By Type: Search on MISUMI official website
C-CTRTE

By Keyword: Step 1 Search on MISUMI official website
trim

Step 2 Select MISUMI economy series brand
 MISUMI MISUMI economy

MISUMI contact

Tel: 038-959200 or 1382
Email: cs@misumi.co.th

MISUMI WEB "Chat"



Install MISUMI APP



Representative model: C-TRSAT2-X-L50



Save Up to **72%**
vs Standard Type

3,408 THB

Shipping from **1 day**

Volume Discount

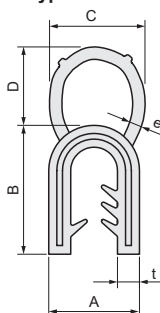
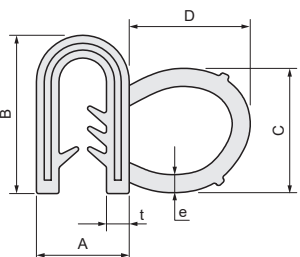
Quantity	1~3	4~5	6~
Discount	Unit Price	15%	30%



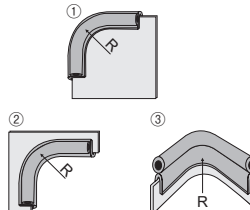
Shipping days may differ by Quantity.
Quantity of volume discount above is for representative Part No. It may differ by the Part.

X Type

Y Type



Bending Direction



Material: Body Material: Ethylene Propylene Rubber (EPDM)
Metal Core Material: Steel Sheet (Q195)

Part Number		③ Rubber Sealing Mold Position	④ Length	Applicable Plate Thickness Range	A	B	C	D	t	e	Min. Bending Radius		
① Type	② Nominal Specification										Bending Direction ①	Bending Direction ②	Bending Direction ③
C-TRSAT	2	X	50 (50m/roll)	1.0~2.0	8.8	14	11.2	10.5	2.3	1.6	60	80	Not Applicable
	3.2			2.1~3.2	9.8	14.7	12.9	14		1.8	80	100	
	2	Y		1.0~2.0	8.8	13.5	12	8.2		1.3	Not Applicable	Not Applicable	50
	3.2			2.1~3.2	9.8	14.7	14.8	13		1.8	Not Applicable	Not Applicable	60

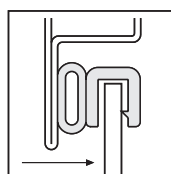
① This product is sold in rolls with 50m/roll.

② The minimum bending radius is the test value, not the guaranteed value of product performance. For reference only

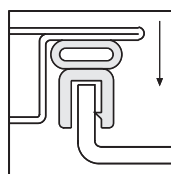
Ordering Example

Please order after selecting part number and parameters according to the selection steps ① to ④.
Part Number (①Type · ②Specifications) - **③Rubber Sealing Mold Position** - **④Length**
C-TRSAT2 - **X** - **L50**

EX Example



When rubber sealing mold is at X position



When rubber sealing mold is at Y position

⑤ Outer diameter size of rubber sealing mold flattened to 40~60% of the normal size is most suitable for use.

How to search on website



By Type

Search on MISUMI official website

C-TRSAT

By Keyword

Step 1 Search on MISUMI official website

trim

Step 2 Select MISUMI economy series brand

MISUMI MISUMI economy

MISUMI contact

Tel: 038-959200 or 1382
Email: cs@misumi.co.th

MISUMI WEB "Chat"



Install MISUMI APP

