

Posts



Round Posts
Both Ends Tapped
P.937



Round Posts One End
Threaded, One End Tapped
P.938



Hexagonal Posts
Both Ends Tapped
P.939



Hexagonal Posts One End
Threaded, One End Tapped
P.940

P.935

Strut Clamps



One-Touch Strut Clamps
P.942

P.941

Angle Plates



Angle Plates Lightweight, High Rigidity Type
P.944

P.943

Simple Transmission Guide Device

Application Industries: **Medical** **Packing**
Logistics



This figure shows a guide device installed on the automatic conveyor line for transmission, commonly used on conveyors and roller strips to shorten the production interval. It is widely used in packaging, medical devices and logistics industries.

Reference price

01 Strut Clamp × 4 P.942



Equal Dia. Type
Hole Dia. 12mm
C-HLKDE12

104
THB/pcs

Quantity	Unit price	Total price
1	104	104
30	88	2,640

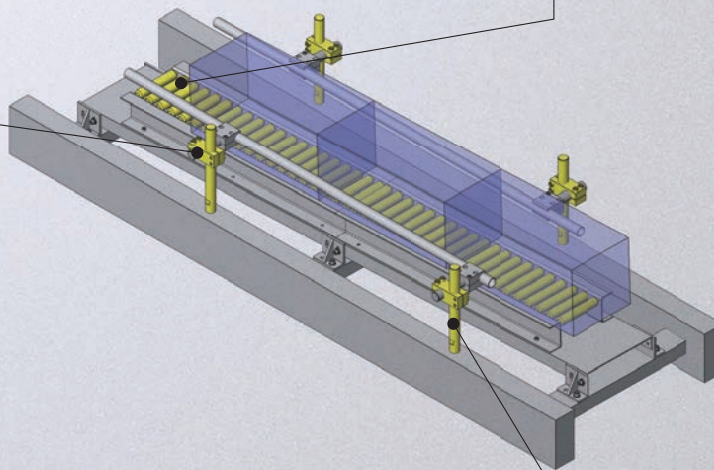
02 Urethane Molded Roller × 40 P.713



Urethane Hardness Shore 90 (Green)
O.D. 30mm
Length 50mm
Core Material: Aluminum Alloy
C-RORUA30-50

474
THB/pcs

Quantity	Unit price	Total price
1	474	474
4	403	1,612



03 Round Post × 4 P.937



O.D. (φ) 12mm
Length 40mm
C-PETR12-40

47
THB/pcs

Quantity	Unit price	Total price
1	47	47
30	40	1,200

* All products prices are without tax. For prices reference, please visit MISUMI official website.

Economy series Round Posts / Hex Posts

Easy installation

Excellent anti-rust performance

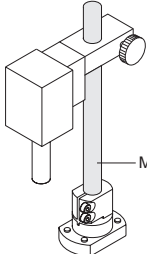
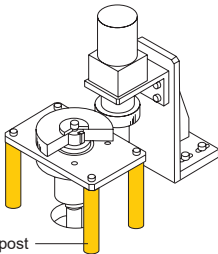
vs Standard Type

Saving
up to

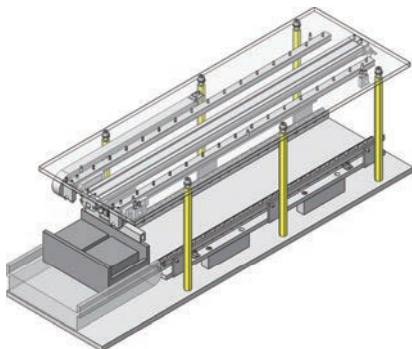
82%



Specification difference between MISUMI standard product and Economy series

	MISUMI standard product	MISUMI Economy series
Material	SS400, SUS304	General Structural Steel or SUM23
Surface Treatment	Electroless Nickel Plating, Ferroferric Oxide Protective Film	Nickel Electroplating or Electroless Nickel Plating
Length L	8 ≤ L ≤ 300	±0.2
Tolerance	300 < L ≤ 600 600 < L ≤ 1000	
	Tolerance ± 0.1 Tolerance ± 0.3 Tolerance ± 0.4	
O.D. / Width across flats (mm)	5~50	6~15
Length L	5~1000	5~200
Dimension (mm)	Length can be specified	Fixed length selection
Function	Supporting and mounting accessories	Supporting
Example of Use	 <p>MISUMI standard post</p>	 <p>Economy series post</p>

Example of Use



Equipment Name: Pull-in Conveyor

Function Description: Pull-in conveyor is a space-saving type of non-driven conveyor.

Function of hexagonal post in mechanism:

- ① The hexagonal post is used as a fastening connector in the mechanism to support the weight of all upper workpieces and increase the stability of the mechanism.
- ② Because the mechanism is often used in narrow space, the fastening method of hexagonal post is very simple and convenient for equipment installation and maintenance.

Salt Spray Test Report (Corrosion resistance: Economy series is equivalent to MISUMI standard product)

MISUMI Economy series

Material: General Structural Steel
or SUM Material
Surface Treatment: Nickel
Electroplating or Electroless Nickel
Plating
Test Result: No Obvious Rust



MISUMI standard product

Material: SS400
Surface Treatment: Electroless
Nickel Plating
Test Result: No Obvious Rust



Generic products on the market ①*

Material: S45C
Surface Treatment: Electroless
Nickel Plating
Test Result: Large Area of
Corrosion



Generic products on the market ②*

Material: SUM23
Surface Treatment:
Electroplated Nickel Plating
Test Result: Completely
Rusted

- Test Method: Corrosion test according to standard ASTM B117 test method
- Test Conditions: ① Salt water spray test (5%NaCl,35°C)
- ② Volume of salt solution 1.0~2.0ml/hr
- ③ Salt solution PH value 6.5~7.2

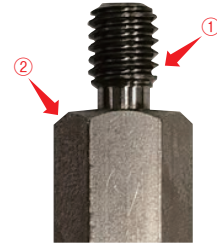


Corrosion resistance: Economy series is equivalent to MISUMI standard product

Economy series product thread with the relief groove, aesthetic

MISUMI Economy series

Feature ①: The male thread has a relief groove
to screw the thread to the bottom.
Feature ②: The end face is chamfered and
deburred, which is aesthetic.
Product Example:



Generic products on the market

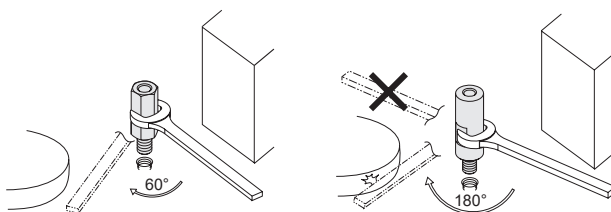
Feature ①: Incomplete thread is left at the bottom,
which cannot be screwed in completely.
Feature ②: No chamfer, and risk of cutting
Product Example:



* Generic products on the market are similar products randomly purchased by our company from online or offline markets
* The test data are obtained through testing by our company, which are for reference only

Product use and relief groove reference value

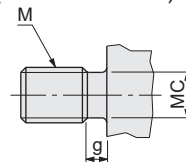
· Feature: The wrench can be used for the hexagonal post in more places than the round post, and the wrench can be used even near the workpiece, and the wrench can be changed every 60°. When using the round post, make sure that there is room for turning the wrench.



When using a wrench on
the hexagonal post

When using a wrench on the
round post

· Post Dimensions of male thread relief
groove (reference value)



M	MC	g
3	2.3	1
4	3	1.2
5	3.9	1.5
6	4.3	2
8	6.2	2.5

Round Posts Both Ends Tapped

Representative model: C-PETR6-50

Save Up to **78%** vs Standard Type

29

THB

Shipping from **1 day**

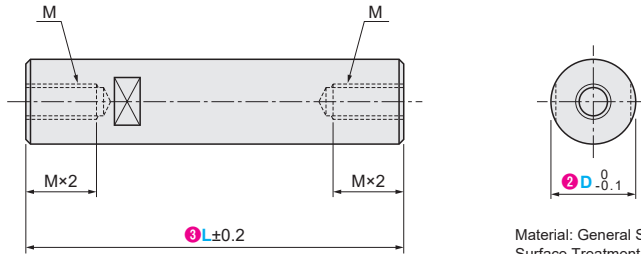


Volume Discount

Quantity	1~29	30~49	50~
Discount	Unit Price	15%	30%



Shipping days may differ by Quantity.
Quantity of volume discount above is for representative Part No. It may differ by the Part.



Material: General Structural Steel or SUM Material
Surface Treatment: Nickel Electroplating or Electroless Nickel Plating

Part Number		Length L (Fixed Size Selection)								M (Coarse Thread)
1 Type	2 O.D. D	3								
C-PETR	6	20	30	40	50					3
	8		30	40	50	60	80			4
	10		30	40	50	60	80	100	150	5
	12			40	50	60	80	100	150	200

- ① L≤M×4 female thread is the through hole.
- ② When L≤M×6, the bottom hole of the female thread may be penetrated.
- ③ L≥M×2+N×2
- ④ The surface of the product may be barrel plated, so the appearance may have some bumps and bruises.
- ⑤ The thread specifications only ensure the actual matching accuracy of screws and nuts.

Ordering Example

Please order after selecting part number and parameters according to the selection steps ① to ③.
Part Number (① Type · ② D) - ③ L
C-PETR6 - 50

Example

Intended Use	Support and Fixation
Usage Method Diagram	
Feature	It can bear large load in vertical direction

How to search on website

By Type: Search on MISUMI official website

By Keyword: Step 1 Search on MISUMI official website Step 2 Select MISUMI economy series brand

MISUMI MISUMI economy

MISUMI contact

Tel: 038-959200 or 1382
Email: cs@misumi.co.th

MISUMI WEB "Chat"



Install MISUMI APP





Representative model: C-PETGR6-50

Save Up to **82%** vs Standard Type

29

THB

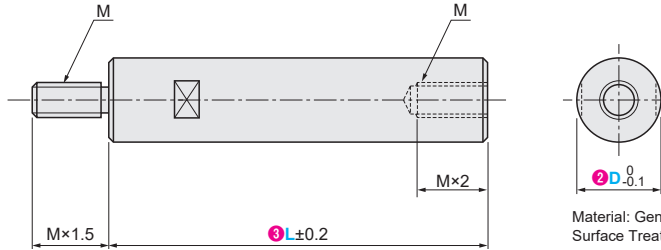


Volume Discount

Quantity	1~29	30~49	50~
Discount	Unit Price	15%	30%



⌚ Shipping days may differ by Quantity.
⌚ Quantity of volume discount above is for representative Part No. It may differ by the Part.



Material: General Structural Steel or SUM Material
Surface Treatment: Nickel Electroplating or Electroless Nickel Plating

Part Number		③ Length L (Fixed Size Selection)										M (Coarse Thread)	
① Type	② O.D. D												
C-PETGR	6	20	30	40	50	60						3	
	8	20	30	40	50	60	80						4
	10	20	30	40	50	60	80	100	120				5
	12	30	40	50	60	80	100	120	150				6
	15	40	50	60	80	100	120	150	200				8

⌚ The surface of the product may be barrel plated, so the appearance may have some bumps and bruises.
⌚ The thread specifications only ensure the actual matching accuracy of screws and nuts.

Ordering Example Please order after selecting part number and parameters according to the selection steps ① to ③.
Part Number (①Type · ②D) - ③L
C-PETGR6 - 50



Intended Use	Fastening and Connection	Separation
Usage Method Diagram		
Feature	· Simple and aesthetic connection	· Connected to the baffle, effectively blocking the running mechanism, and anti-interference · Easy to fasten, and can be installed even in narrow spaces

How to search on website

By Type: Search on MISUMI official website

By Keyword: Step 1 ▶ Search on MISUMI official website Step 2 ▶ Select MISUMI economy series brand
 MISUMI MISUMI economy

MISUMI contact
Tel: 038-959200 or 1382
Email: cs@misumi.co.th

MISUMI WEB "Chat"

Install MISUMI APP

Hexagonal Posts Both Ends Tapped

Representative model: C-PLSBRK10-30

Save Up to **71%**
vs Standard Type

Shipping
from
1 day



36

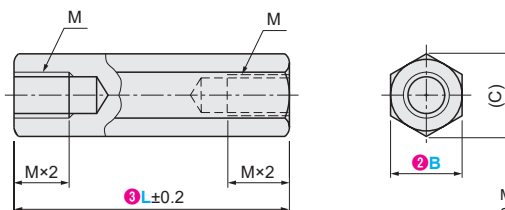
THB

Volume Discount

Quantity	1~29	30~49	50~
Discount	Unit Price	15%	30%



Shipping days may differ by Quantity.
Quantity of volume discount above is for representative Part No. It may differ by the Part.



Material: General Structural Steel or SUM Material
Surface Treatment: Nickel Electroplating or Electroless Nickel Plating

Part Number ① Type	② Width across flats B	③ Length L (Fixed Size Selection)						M (Coarse Thread)	(C)	
		15	20	30	40	60	80			
C-PLSBRK	6	15	20	30	40			3	6.9	
	7		20	30	40	60	80	4	8.1	
	8			30	40	60	80	5	9.2	
	10			30	40	60	80	6	11.5	
	12			30	40	60	80		100	13.9
	14				40	60	80	100	150	200

- ① L≤M×4 female thread is the through hole.
- ② When L≤M×6, the bottom hole of the female thread may be penetrated.
- ③ L≥M×2+N×2
- ④ The surface of the product may be barrel plated, so the appearance may have some bumps and bruises.
- ⑤ The thread specifications only ensure the actual matching accuracy of screws and nuts.

Ordering Example

Please order after selecting part number and parameters according to the selection steps ① to ③.

Part Number (① Type · ② B) - ③ L
C-PLSBRK10 - 30



Intended Use	Support and Fixation
Usage Method Diagram	
Feature	It can bear large load in vertical direction

How to search on website



By Type

Search on MISUMI official website

C-PLSBRK



By Keyword

Step 1 Search on MISUMI official website

hex post



Step 2 Select MISUMI economy series brand

MISUMI



MISUMI contact

Tel: 038-959200 or 1382
Email: cs@misumi.co.th

MISUMI WEB "Chat"



Install MISUMI APP



Representative model: C-PLSBWRK10-30

Save Up to **76%** vs Standard Type

Shipping from **1 day**



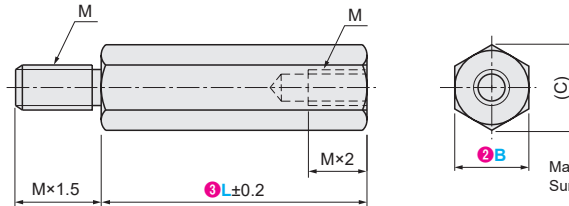
36 THB

Volume Discount

Quantity	1~29	30~49	50~
Discount	Unit Price	15%	30%



Shipping days may differ by Quantity.
Quantity of volume discount above is for representative Part No. It may differ by the Part.



Material: General Structural Steel or SUM Material
Surface Treatment: Nickel Electroplating or Electroless Nickel Plating

Part Number	Type	Width across flats B	Length L (Fixed Size Selection)						M (Coarse Thread)	C		
			15	20	30	40	50	60			80	100
C-PLSBWRK	6	6	15	20	30	40	50	3	6.9			
	7	7	20	30	40	50	60	80	100	4	8.1	
	8	8	20	30	40	50	60	80	100	150	5	9.2
	10	10	30	40	50	60	80	100	150	6	11.5	
	12	12	30	40	50	60	80	100	150		200	13.9
	14	14	40	50	60	80	100	150	200	8	16.2	

The surface of the product may be barrel plated, so the appearance may have some bumps and bruises.
The thread specifications only ensure the actual matching accuracy of screws and nuts.
Please order after selecting part number and parameters according to the selection steps 1 to 3.

Ordering Example

Part Number (1) Type · (2) B - (3) L
C-PLSBWRK10 - 30

Example

Intended Use	Fastening and Connection	Separation
Usage Method Diagram		
Feature	· Simple and aesthetic connection	· Connected to the baffle, effectively blocking the running mechanism, and anti-interference · Easy to fasten, and can be installed even in narrow spaces

How to search on website



By Type: Search on MISUMI official website
C-PLSBWRK

By Keyword: Step 1 Search on MISUMI official website
hex post

Step 2 Select MISUMI economy series brand
 MISUMI MISUMI economy

MISUMI contact

Tel: 038-959200 or 1382
Email: cs@misumi.co.th

MISUMI WEB "Chat"



Install MISUMI APP



Economy series Strut Clamps

Equal Dia. / Unequal Dia.

One-Touch

Clamping Force

Low price



vs Standard Type

Saving
up to

84%

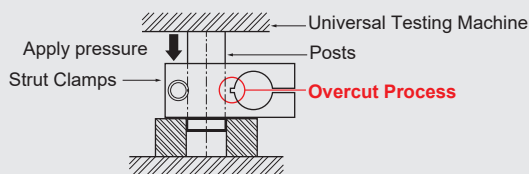


Appearance improvement & specification change for medium precision and medium load fixed applications

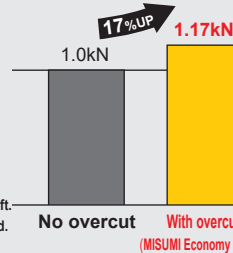
	MISUMI standard product	MISUMI Economy series
Appearance	 Bolt head exposed	 Use the counterbored hole to conceal the bolt head in the main body
I.D. Tolerance / 2 Hole Straight Angle	H7 / 0.05	0~+0.05 / General Tolerance
Material	Iron/Aluminum/Stainless Steel	Aluminum
Number of Fastening Bolts	φ12 or less: 1 pcs φ15 or more: 2 pcs	1 in full size... Reduce assembly time!

Additional Overcut Process: Stronger Locking Force

Clamping Force Test



Test Result

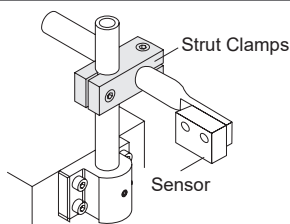


Although there is only 1 bolt, the clamping force can still reach **1.17kN** (Reference Value of Shaft Dia. 20mm)

* Test Method: Clamp with the specified torque and apply vertical downward pressure to the shaft. The maximum holding force is the axial load recorded when the shaft is displaced.

* Test Conditions: ① I.D. of measured object: 20mm ② Clamping torque: 7.54N·m

Example of Use for Strut Clamp



Purpose of supporting sensors/cameras, etc.



Commonly used in mounting brackets for sensors

The strut clamp is used to fix the sensor, and the clamping force is more important than the accuracy. However, the economy series strut clamp only uses one bolt but ensures sufficient clamping force, which can be safely used.

Representative model: C-HLKDE8

Save Up to **84%** vs Standard Type

Shipping from **1 day**



104 THB

Volume Discount

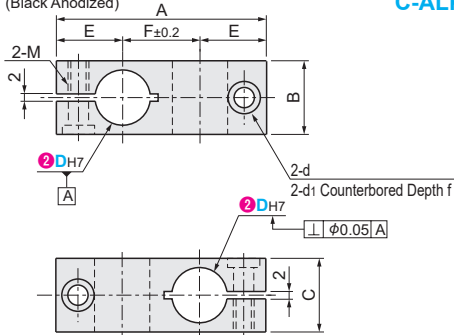
Quantity	1~29	30~49	50~
Discount	Unit Price	15%	30%



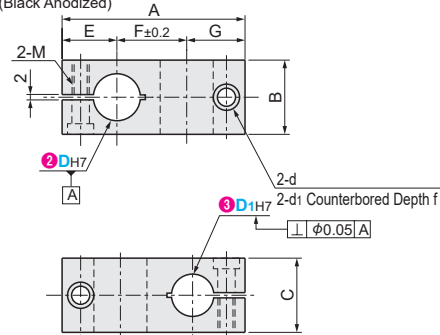
Shipping days may differ by Quantity.
Quantity of volume discount above is for representative Part No. It may differ by the Part.

Type		Material	Surface Treatment	Accessories
Equal Dia. Perpendicular Type	Unequal Dia. Perpendicular Type			
C-HLKDE C-ALKDE	C-HLKDU C-ALKDU	Aluminum Alloy	Clear Anodized Black Anodized	Hexagon Socket Head Bolt

Equal Dia. Perpendicular Type
C-HLKDE (Clear Anodized)
C-ALKDE (Black Anodized)



Unequal Dia. Perpendicular Type
C-HLKDU (Clear Anodized)
C-ALKDU (Black Anodized)



For unmarked dimensions, the tolerance of $\phi 20$ or less (including 20) is ± 0.3 . The tolerance of $\phi 25$ or more is ± 0.5 .
Since the slit part is machined after the mounting hole D is machined with a tolerance of 0 to +0.05, the hole tolerance will change.

Equal Dia. Perpendicular Type

Part Number		A	B	C	E	F	d	d ₁	f	Supplied Bolt (Coarse Thread·Stainless Steel) M
1 Type	2 Hole Dia. D									
C-HLKDE (Clear Anodized) C-ALKDE (Black Anodized)	8	41	15	15	14	13	8	4.5	4.2	M4
	10	45	16	16	15	15				
	12	49	16	16	16	17				
	15	57	20	20	18	21	9	5.5	5.2	M5
	16		22	22						
	20		69	25	25	22				
25	86	35	35	26	33	14	8.5	8.2	M8	
30	95	40	40	29	37					

Unequal Dia. Perpendicular Type

Part Number		3 Hole Dia. D ₁	A	B	C	E	G	d	d ₁	f	Supplied Bolt (Coarse Thread·Stainless Steel) M			
1 Type	2 Hole Dia. D													
C-HLKDU (Clear Anodized)	10	8	45	20	20	15	15	8	4.5	4.2	M4			
	12	10	49			16	16					9	5.5	5.2
	15	10	57			18	18							
C-ALKDU (Black Anodized)	20	15	69	25	25	22	22	11	6.5	6.2	M6			
	16	15												
	25	15	86	35	26	26	14					8.5	8.2	
	30	20	95	40	30	29								

Please order after selecting part number and parameters according to the selection steps 1 to 3.

Ordering Example

Equal Dia. Perpendicular Type **Part Number (1 Type · 2 D)**
C-HLKDE8

Unequal Dia. Perpendicular Type **Part Number (1 Type · 2 D)** - **3 D₁**
C-HLKDU10 - **8**



By Type **C-HLKDE**

By Keyword **strut clamp**

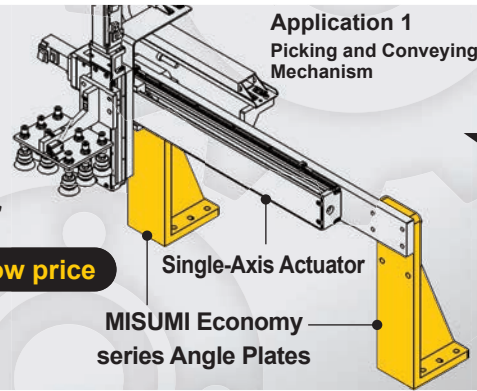
Step 1 Search on MISUMI official website Step 2 Select MISUMI economy series brand



Economy series Angle Plates

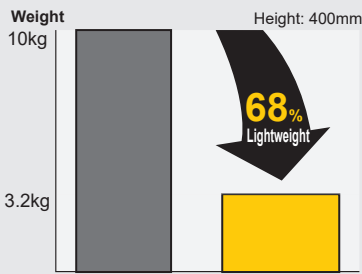
Suitable for mechanism part holder

- Lightweight
- High rigidity
- Low price



vs Standard Type
Saving up to 30%

Adopt Chinese aluminum casting to realize **lightweight** and ensure **low price**



Iron Welding, etc. Aluminum Casting MISUMI Economy series

- Height 400mm, allowing pickup with one hand
- Mass production of standard specifications, and domestic casting process to achieve low prices

Replacing the current iron welded angle plates outsourced

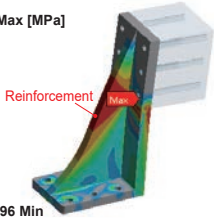
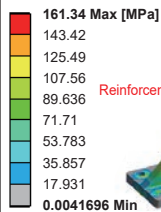
It is used to fix the Single-Axis Actuator and other mechanisms, and the load-bearing capacity is about 20kg. It is enough to use aluminum angle plate. However, aluminum casting has requirements for the minimum order quantity, so iron welded angle plate will be used. If there are cheap aluminum products, it is more in line with the lightweight design trend.



Reinforcement to ensure **high rigidity**

Thickening and strengthening of reinforcement parts according to FEA analysis

Stress concentration in the reinforcement area



Enhancement of reinforcement thickness

Height H	MISUMI standard product	MISUMI Economy series
100	10	10
150	14	15
200	14	15
250	15	18
300	15	18
350	15	18
400	15	18

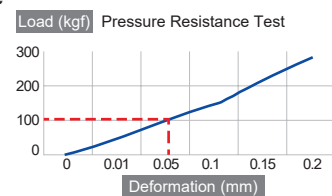
Compression Deformation Test

Physical test of angle plate pressure resistance



* Test Object C-AIKK300-100 (Height 300)

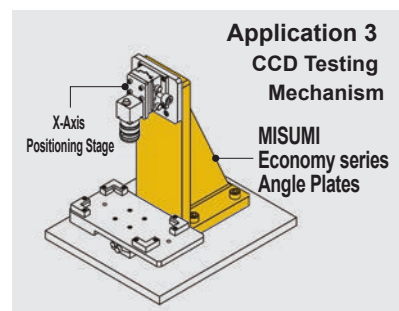
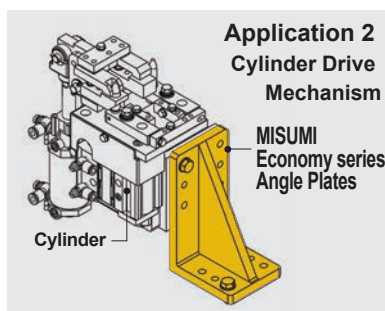
Load deformation curve (reference)



100kg load deformation is only 50µm

Guaranteed **perpendicularity tolerance 0.05mm**, with wide range of applications

	Perpendicularity tolerance	Recommended Applications
MISUMI standard product	0.02 / 100	Automotive Welding / Inspection Fixture
MISUMI Economy series	0.05 / 100	FA Industry Equipment





Representative model: C-AIKK200-100

Save Up to **30%** vs Standard Type

Shipping from **1 day**

1,511 THB

Volume Discount

Quantity	1~3	4~5	6~
Discount	Unit Price	15%	30%

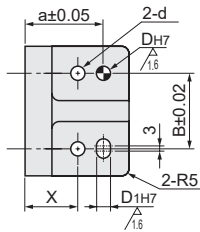


Shipping days may differ by Quantity.

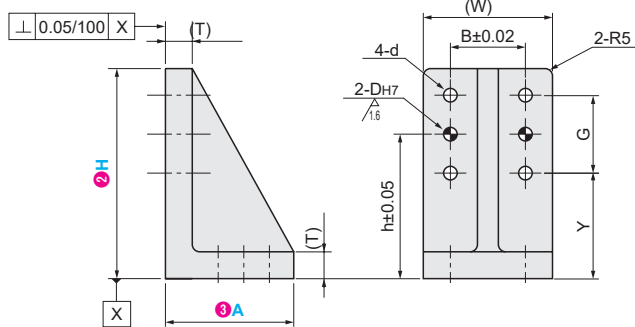
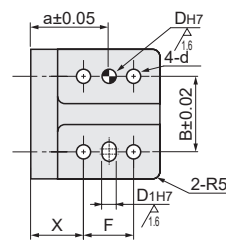
Quantity of volume discount above is for representative Part No. It may differ by the Part.

Material	Surface Treatment
Cast aluminum	Not Provided

When A = 60, 70



When A = 100 or more



- Tolerances are not guaranteed where dimensional and geometric tolerances are not marked.
- The dimension with () is for reference only.
- The appearance of the product will have casting marks as it is a casting product, which does not affect normal use.

Part Number ① Type	Height H ②	A Dimension ③	Angle Plate Body		Through Hole					Positioning Hole				
			(W)	(T)	d	B	X	F	Y	G	DH7	D1H7	a	h
C-AIKK	100	60	60	10	6.5	35	30	-	40	40	10	10	45	60
	150	70	100	15	11	70	40	-	75	60			55	105
	200	100		18			45	40	110	70			65	145
	250		18	45	40	130	100	65	180					
	300		18	45	40	180	100	65	230					
	350		150	40	90	230	120	85	280					
	400	150	40	90	260	120	85	320						

Dimensions with () are for reference only and not in accordance with general tolerances.

Ordering Example

Please order after selecting part number and parameters according to the selection steps ① to ③.

Part Number (① Type · ② Height H) - ③ A Dimension
C-AIKK200 - 100

How to search on website



By Type Search on MISUMI official website
C-AIKK

By Keyword Step 1 Search on MISUMI official website Step 2 Select MISUMI economy series brand
angle plate MISUMI MISUMI economy

MISUMI contact

Tel: 038-959200 or 1382
Email: cs@misumi.co.th

MISUMI WEB "Chat"



Install MISUMI APP

